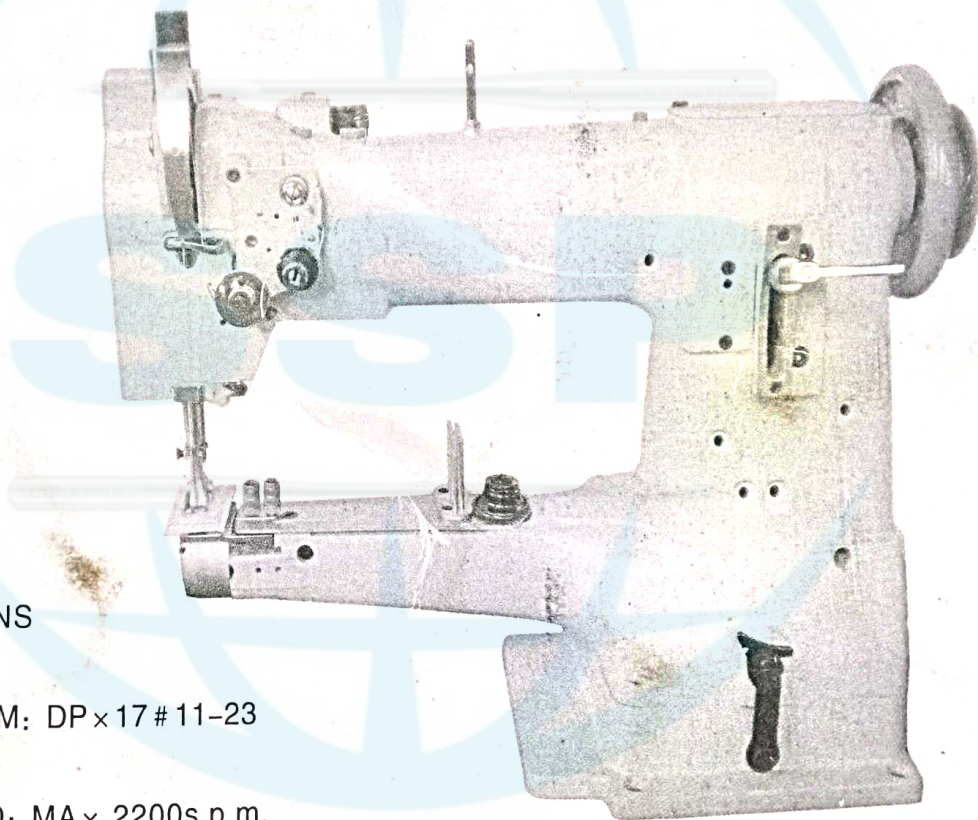


# 工業用縫紉機

## INDUSTRIAL SEWING MACHINE

### 335 筒型綜合送料厚用縫紉機

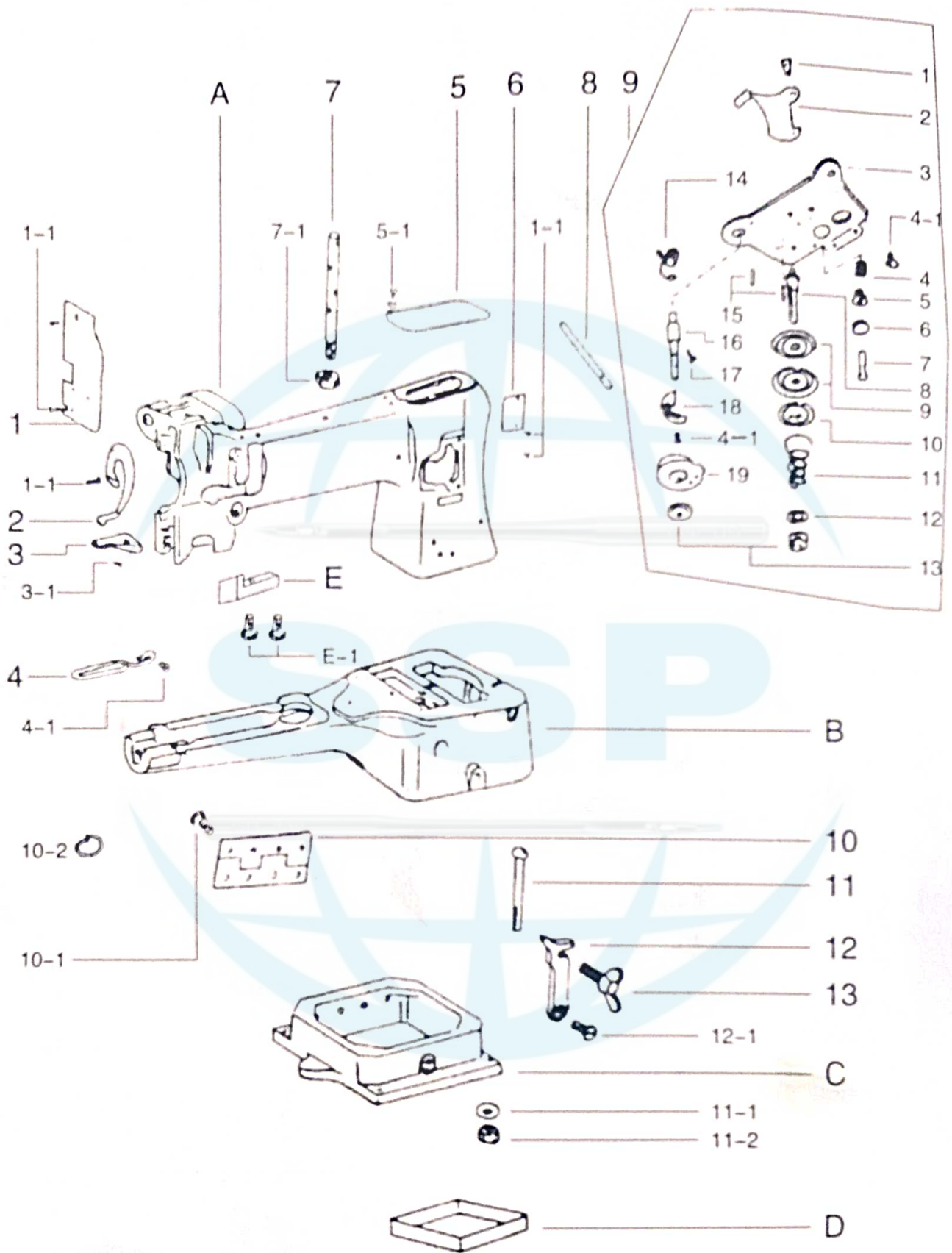
零件冊  
PARTS LIST



- ※ 規格  
SPECIFICATIONS
- ※ 針號  
NEEDLE SYSTEM: DP x 17 # 11-23
- ※ 最高縫速  
SEWING SPEED: MA x .2200s.p.m.
- ※ 最大縫距  
STITCH LENGTH: MA x .6.5 MM

本機適用於中、厚物，皮或合成皮之包縫；如皮包、皮鞋、運動鞋及一般皮制品等。

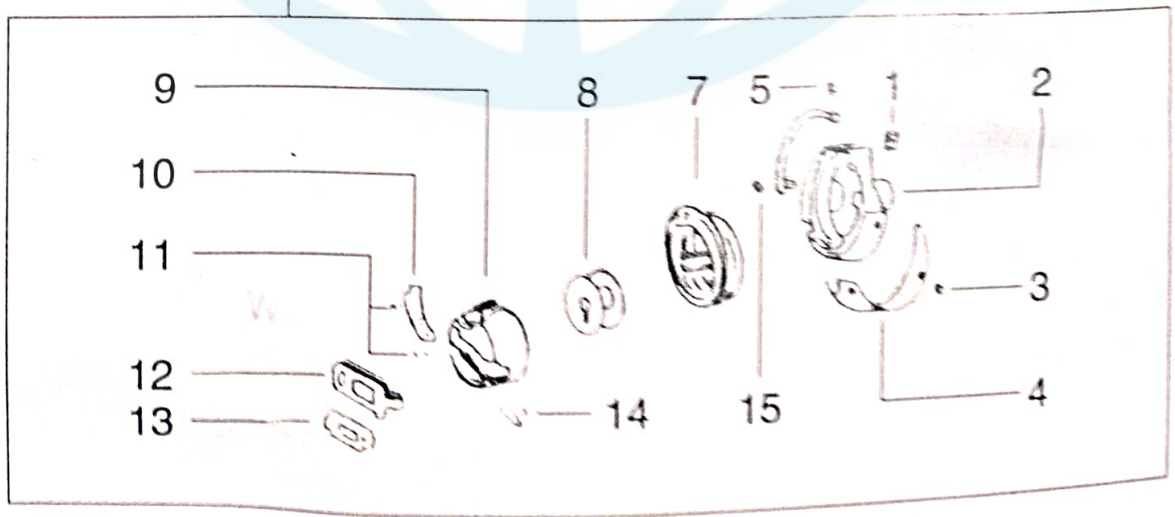
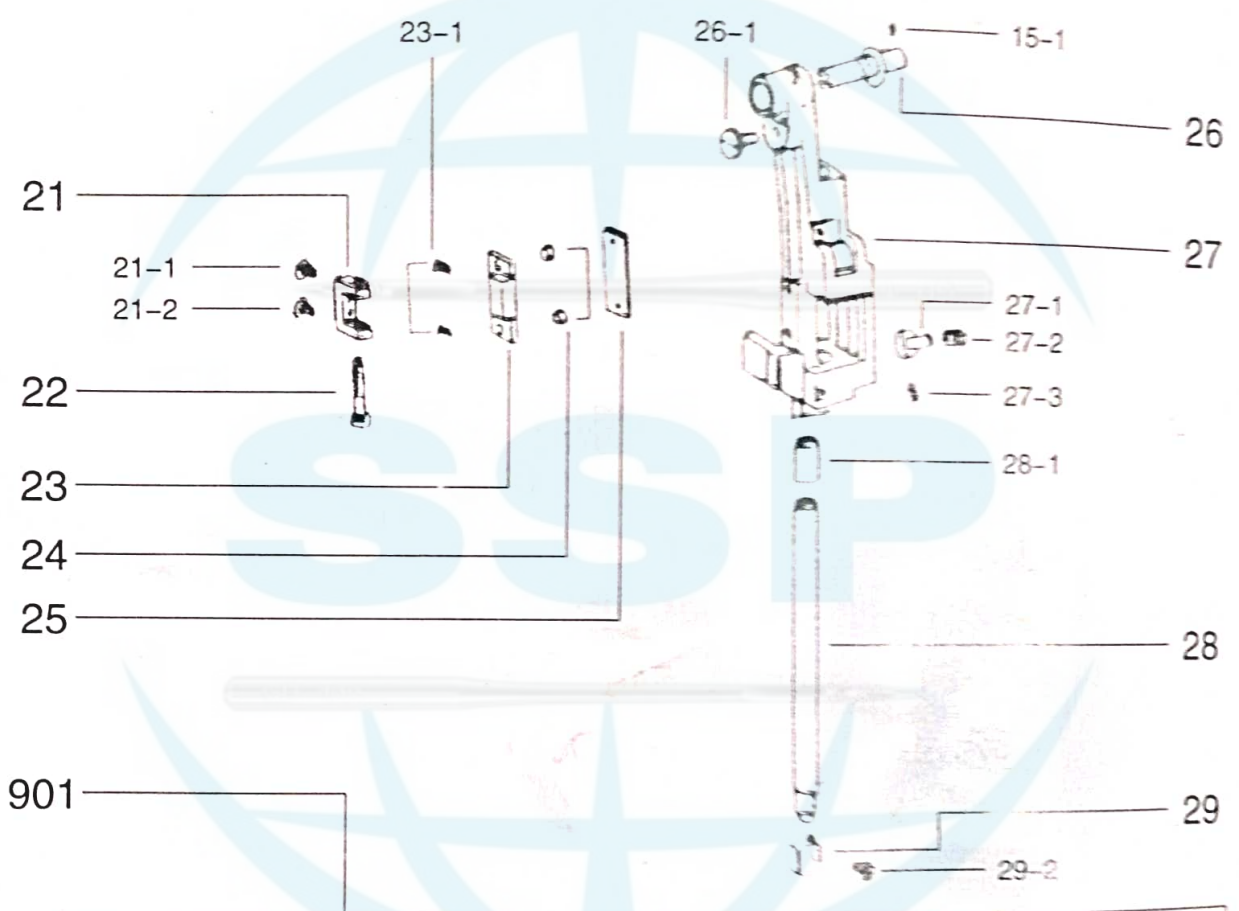
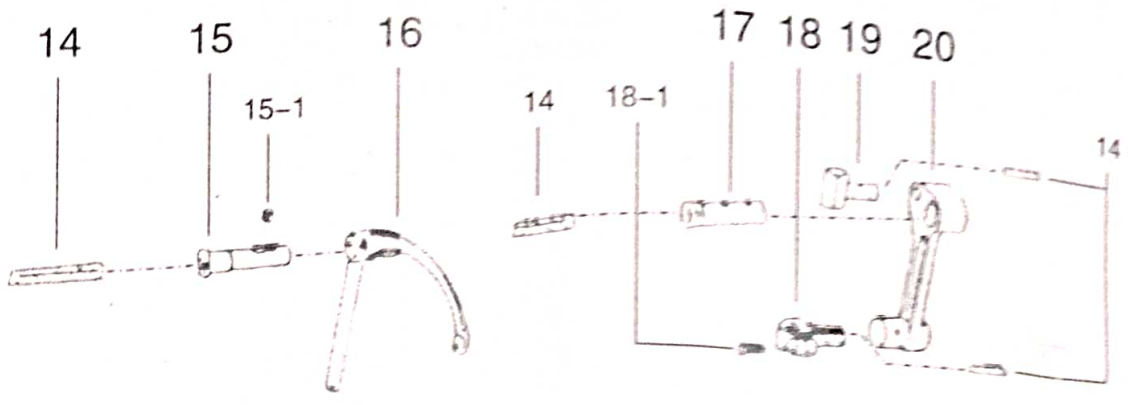
THIS MACHINE IS SUITABLE FOR SEWING MEDIUM/HEAVY THICKNESS LEATHER OR FABRIC PRODUCTS SUCH AS: HANDBAG, LEATHER SHOES SPORTING SHOES, AND GENERAL LEATHER PRODUCTS.



BEFORE SEARCHING ADD  
335 AND PART NUMBER

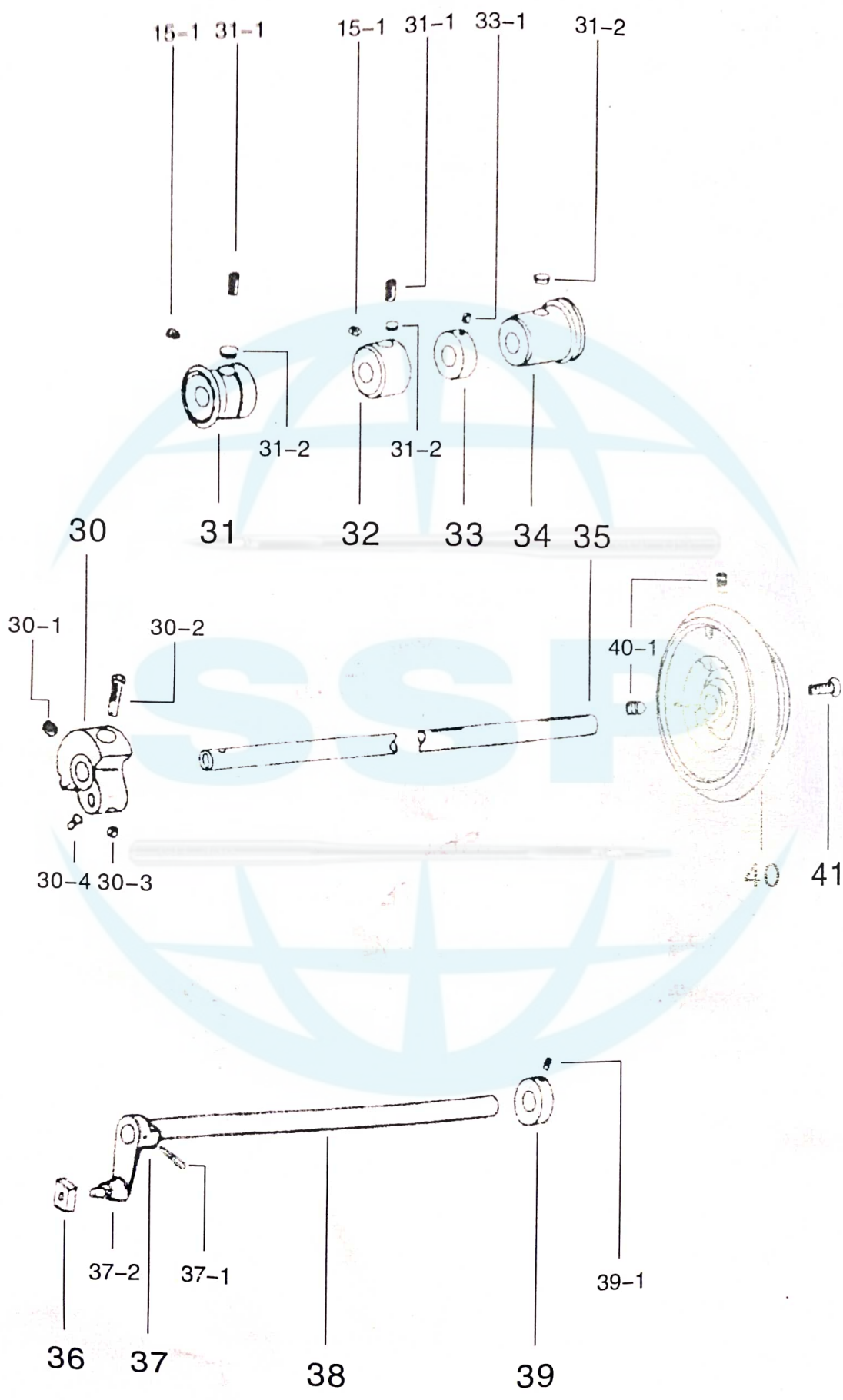
1	面板蓋	FACE PLATE
1-1	螺絲	FASTENING SCREW
2	天秤蓋	LIBRA COVER
3	導綫架 (上)	THREAD GUIDE UPPER
3-1	一字螺絲	FASTENING SCREW
4	下導綫架	THREAD GUIDE
4-1	螺絲	FASTENING SCREW
5	上蓋板	ARM COVER UPPER
5-1	螺絲	FASTENING SCREW
6	前蓋板	ARM COVER FRONT
7	綫柱	TENSION COMPLETE SET
7-1	螺母	NUT
8	鬆綫銷	TENSION RELEASE PIN
9	沙拉組	TENSION COMPLETE
9-14	吊綫彈簧	SUSPENSION WIRE SPRING
9-18	拉綫簧調整板	ADJUSTMENT BOARD
10	鉸鏈	HINGE
10-1	內六角螺釘	FASTENING SCREW
10-2	彈簧	SPRING
11	螺絲	FASTENING SCREW
11-1	墊片	CUSHION
11-2	螺母	NUT
12	掛鈎	LINK
12-1	掛鈎螺絲	FASTENING SCREW
13	蝶形螺釘	FASTENING SCREW
A	機頭	GEAR END
B	下座	DOWN BASE
C	四角底座	FOUR MAO BASE
D	油槽	TANK
E	針棒座擋塊	BLOCKING BOARD
E-1	螺釘	BOLT
102-2	螺母	NUT





BEFORE SEARCHING ADD  
335 AND PART NUMBER

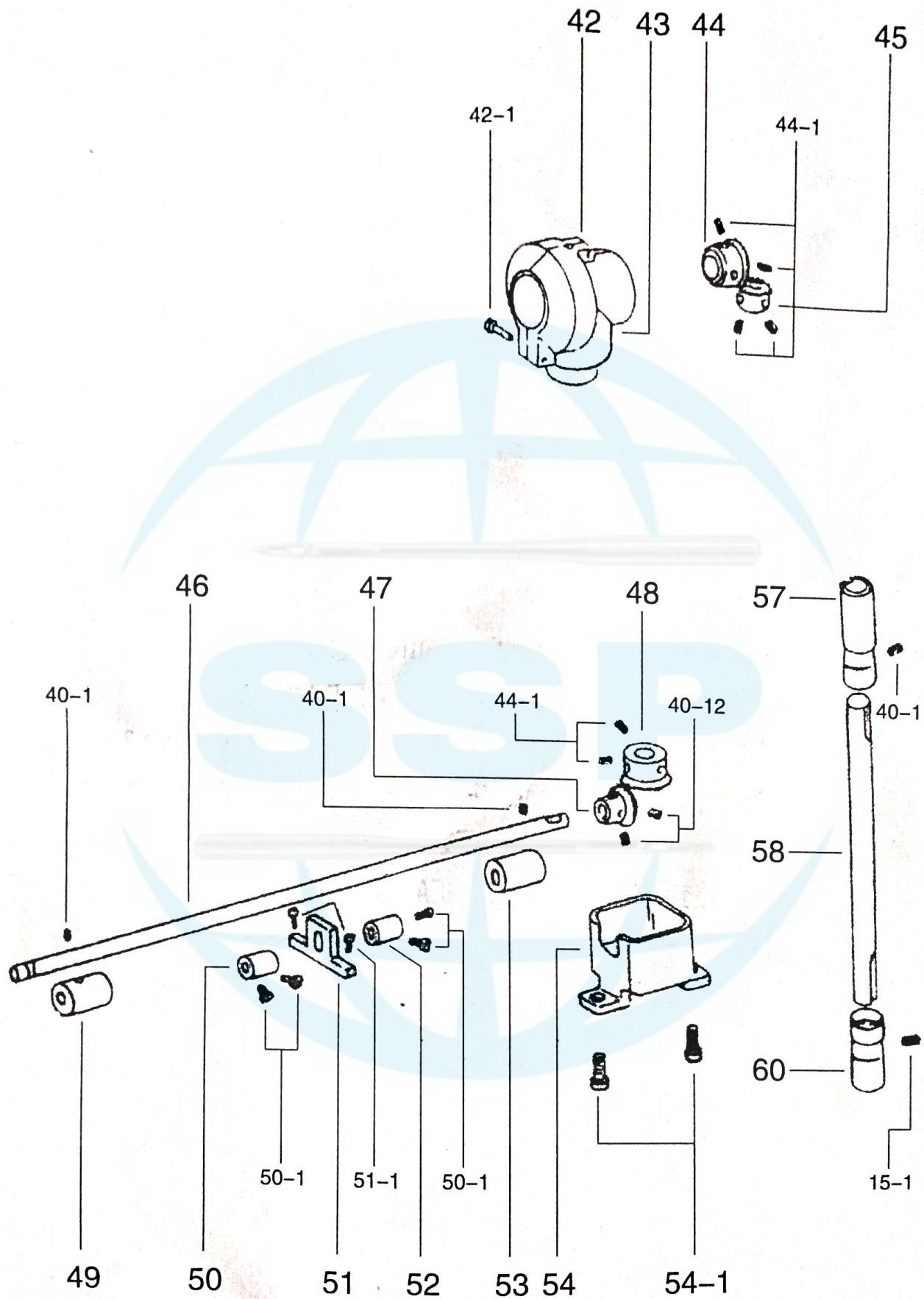
14	油棉	WICK
15	天秤銷	LIBRA TIP
15-1	螺絲	SCREW
16	天秤	THREAD TAKE-UP LIBRA
17	針棒驅動銷	NEEDLE BAR LINK HINGE STUD
18	針棒拉杆	NEEDLE BAR STUD
18-1	一字螺絲	FASTENING SCREW
19	天秤驅動器	TAKE-UP SLEEVE FULCRUM STUD
20	針棒曲柄	FLEX HANDLE
21	滑塊座	SLIDE BLOCK
21-1	螺絲	FASTENING SCREW
21-2	螺絲	FASTENING SCREW
22	連接螺絲	FASTENING SCREW
23	導座	LEAD SEAT
23-1	螺絲	FASTENING SCREW
24	固定環	COLLAR
25	針柱滑塊板	NEEDLE BAR GUIDE PLATE
26	針棒搖動臺軸	NEEDLE BAR FRAME
26-1	螺絲	FASTENING SCREW
27	針棒搖動臺	NEEDLE BAR FRAME
27-1	針柱座固定栓	NEEDLE BAR FRAME STOP
27-2	止付	CENTER SCREW
27-3	止付	CENTER SCREW
28	針棒	NEEDLE BAR
28-1	針柱座套管	NEEDLE COLUMN BASE SLEEVE PIPE
29	鴿子圈	SPRING
29-2	螺絲	FASTENING SCREW
901	大釜	HOOK



BEFORE SEARCHING ADD  
335 AND PART NUMBER

30	曲柄	FLEX HANDLE
30-1	螺絲	FASTENING SCREW
30-2	螺絲	FASTENING SCREW
30-3	緊定螺絲	FASTENING SCREW
30-4	螺絲	SCREW
31	上軸前套	UP SHAFT FRONT BUSHING
31-i	油塞	FELT
31-2	油棉	WICK
32	上軸中套	FELT
33	上軸套環	BEVEL GEAR CASING CAP COLLAR
33-1	螺絲	FASTENING SCREW
34	上軸後套	ARM SHAFT BUSHING BACK COVER
35	上軸	ARM SHAFT
36	針棒座滑塊	SLIDE BLOCK
37	搖動軸前曲銷	BENDED PIN IN FRONT OF WAVING THE AXLE
37-1	斜梢	OBLIQUE TIP
37-2	搖動滑塊銷	WAVE AND SLIP ONE PIN
38	針棒搖動軸	THE NEEDLE WAVES THE AXLE EXCELLENTLY
39	搖架軸緊圈	SET COLLAR
39-1	螺絲	FASTENING SCREW
40	皮帶輪	BALANCE WHEEL
40-1	緊定螺絲	FASTENING SCREW
41	螺絲	FASTENING SCREW

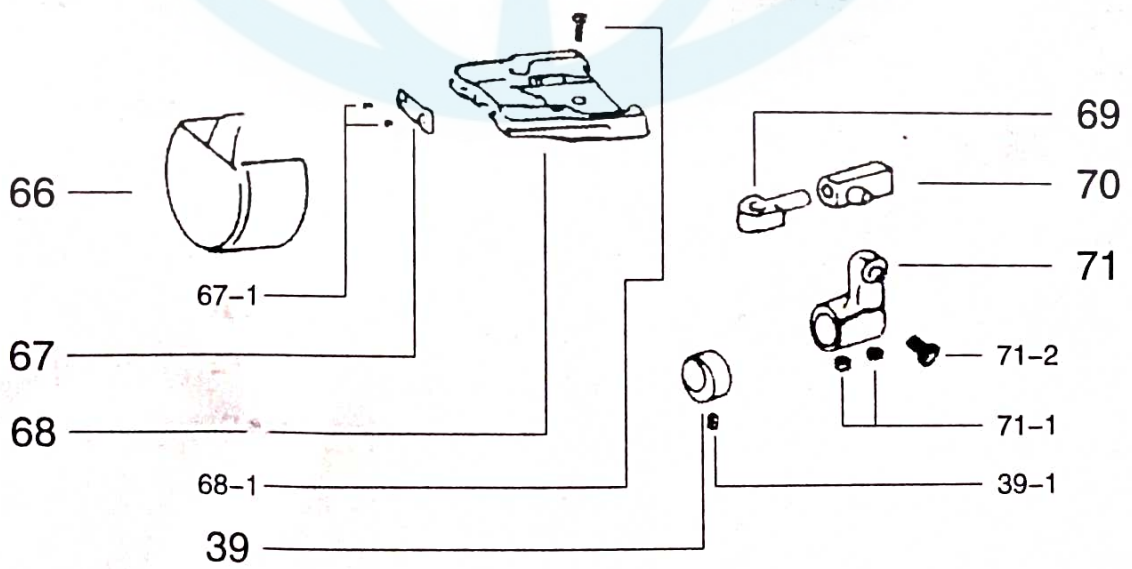
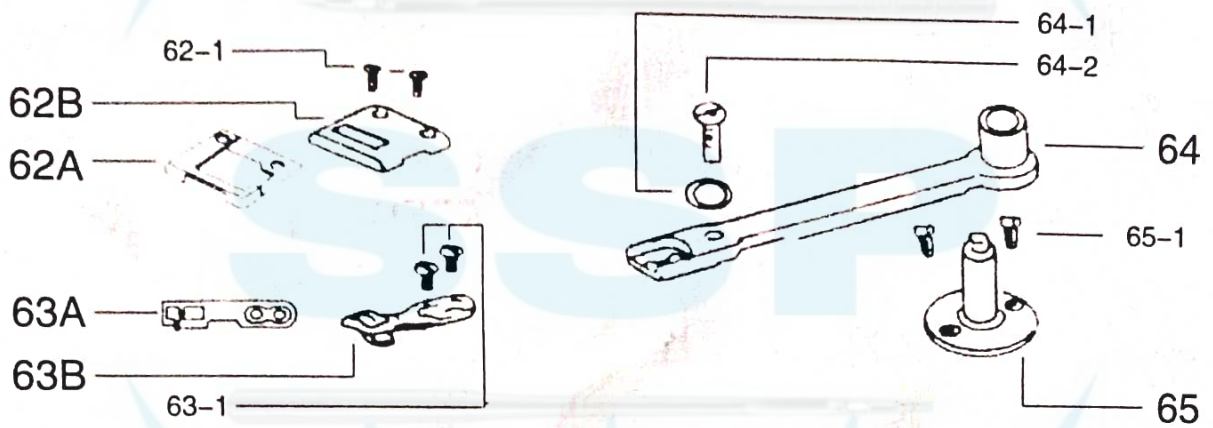
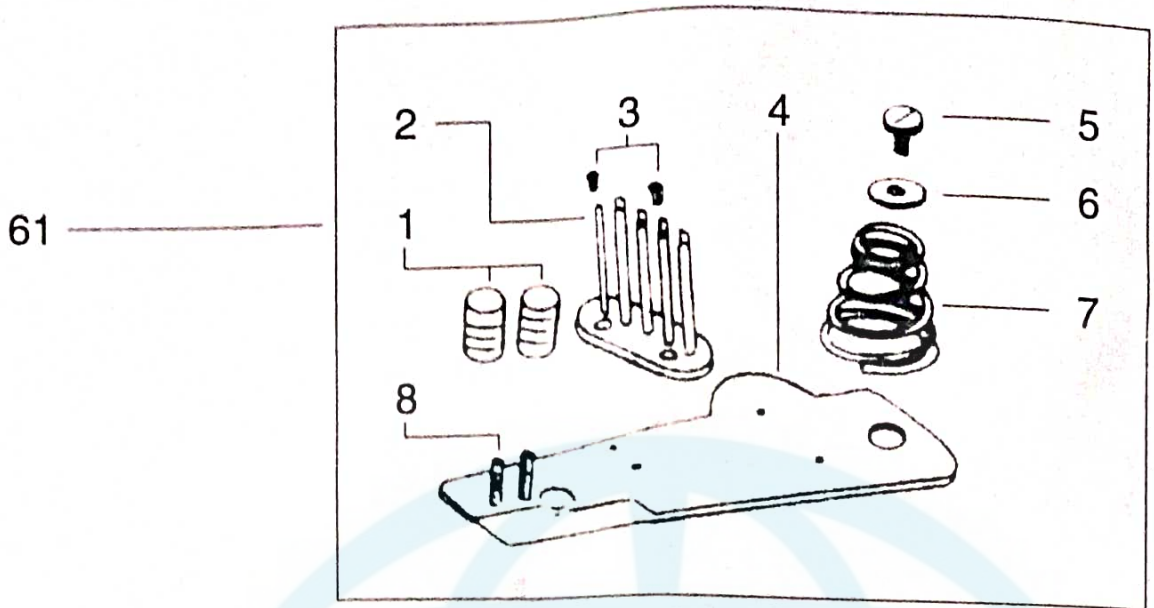






BEFORE SEARCHING ADD  
335 AND PART NUMBER

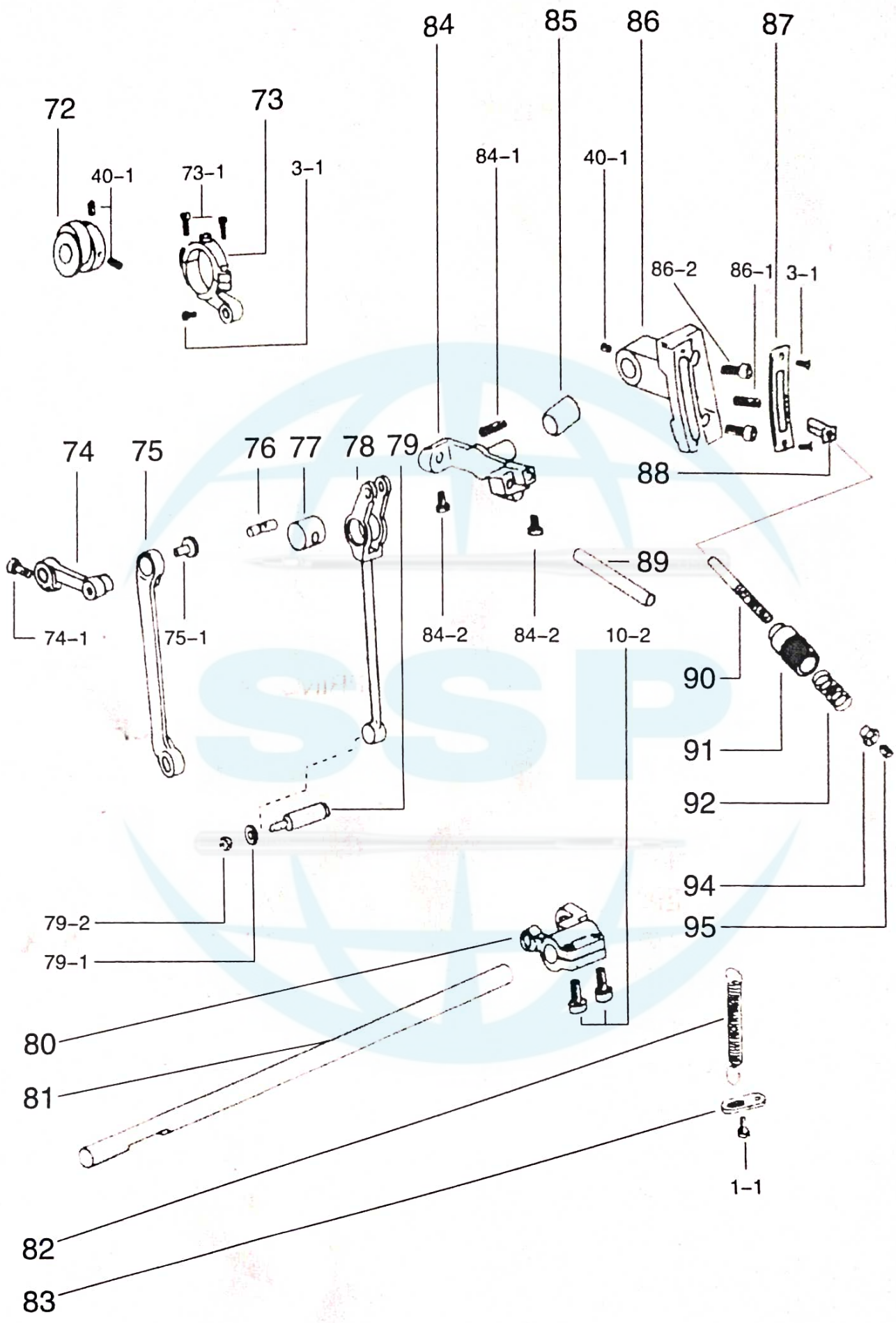
42	齒輪盒 (左)	BEVEL GEAR CASING COMPLETE
42-1	螺絲	SCREW
43	齒輪盒 (右)	BEVEL GEAR CASING COMPLETE
44	上軸齒輪	GEAR SET
44-1	緊定螺絲	FASTENING SCREW
45	豎軸上齒輪	GEAR SET
46	大釜軸	HOOK DRIVING SHAFT
47	下軸齒輪	GEAR SET
47-1	螺絲	SCREW
48	豎軸下齒輪	GEAR SET
49	大釜軸前套筒	FRONT SLEEVE FOR HOOK SHAFT
50	下軸套環	DOWN SHAFT COLLAR
50-1	緊定螺絲	FASTENING SCREW
51	大釜軸支座	HOOK SHAFT BASE
51-1	螺絲	FASTENING SCREW
52	下軸套環	DOWN SHAFT COLLAR
53	下軸後親套	KISS COVER AFTER PUTTING THE AXLE
54	下齒輪盒	BEVEL GEAR CASING UNDER
54-1	螺絲	SCREW
57	豎軸上套筒	BEVEL GEAR SHAFT BUSHING VERTICAL UPPER
58	豎軸	BEVEL GEAR SHAFT VERTICAL
60	豎軸下套筒	BEVEL GEAR SHAFT BUSHING VERTICAL UPPER



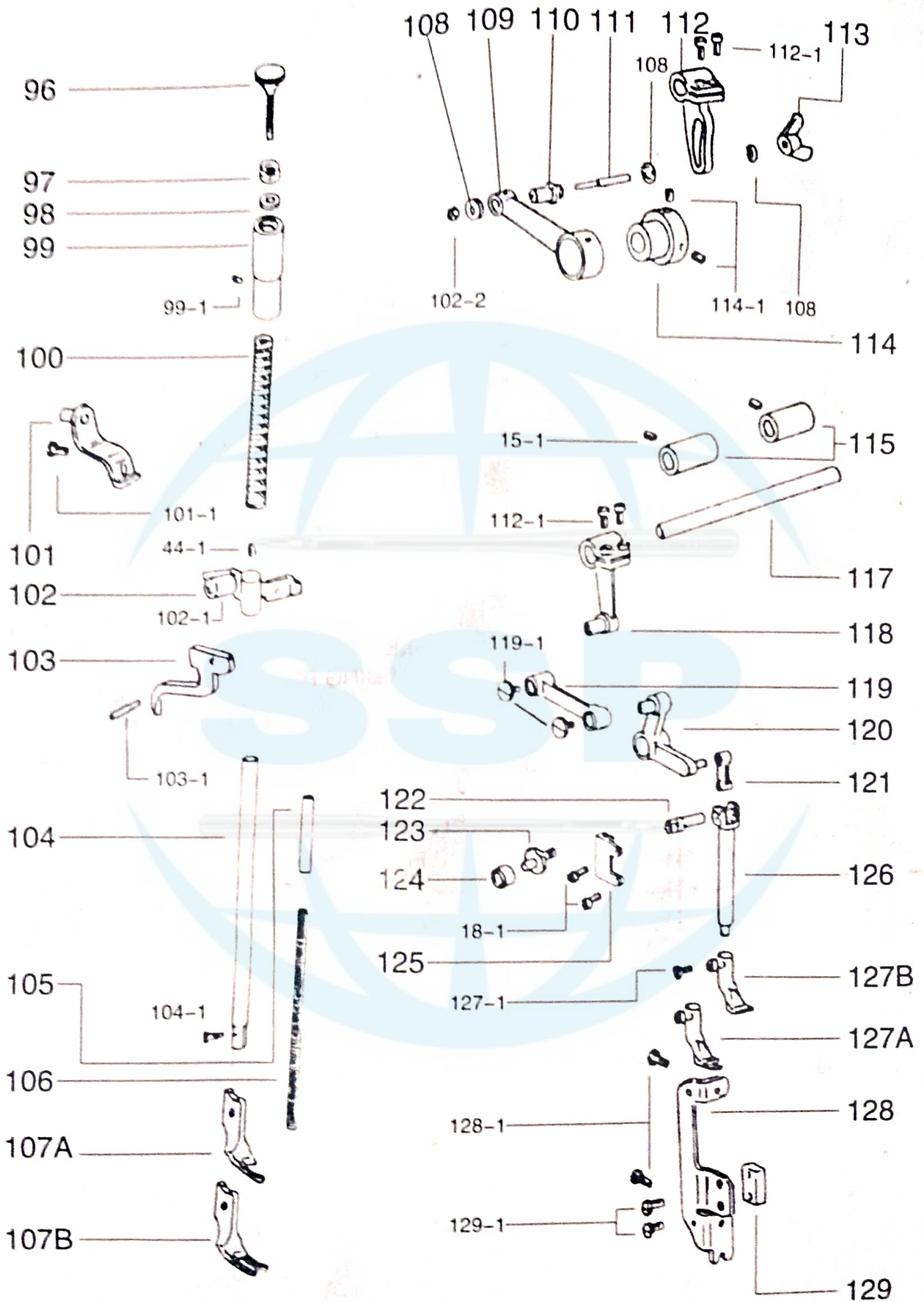


61	滾條固定組	GAUGE PLATE SET
61-1	喇叭座螺母	NUT
61-2	布架杆	FABRIC SUPPORT POLE
61-3	螺絲	SCREW
61-4	床介	FIXTURE BOARD
61-5	螺絲	SCREW
61-6	壓簧墊片	CUSHION
61-7	彈簧	SPRING
61-8	螺絲	SCREW
61-9	布架板	FABRIC SUPPORT PLATE
62-1	螺絲	FASTENING SCREW
62A	喇叭型針板	NEEDLE PLATE
62B	平面型針板	NEEDLE PLATE
63-1	一字螺絲	FASTENING SCREW
63A	喇叭型牙齒	TUBAEFORM TOOTH
63B	平面型牙齒	PLANEFORM TOOTH
64	送料搖杆	FEEDING ROCKER
64-1	墊片	CUSHION
64-2	送料臺軸螺栓	BOLT
65	送料臺軸	FEEDING PLATE SHAFT
65-1	螺絲	FASTENING SCREW
66	大斧蓋	HOOK COVER
67	針護架	NEEDLE EGIS SUPPORT
67-1	螺絲	SCREW
68	針板座	NEEDLE BORAD BASE
68-1	螺絲	SCREW
69	送料滑塊	FEEDING SLIDE VALVE
70	滑塊基座	SLIDE VALVE BASE
71	送料驅動臂	FEEDING DRIVER
71-1	螺絲	FASTENING SCREW
71-2	一字螺絲	FASTENING SCREW





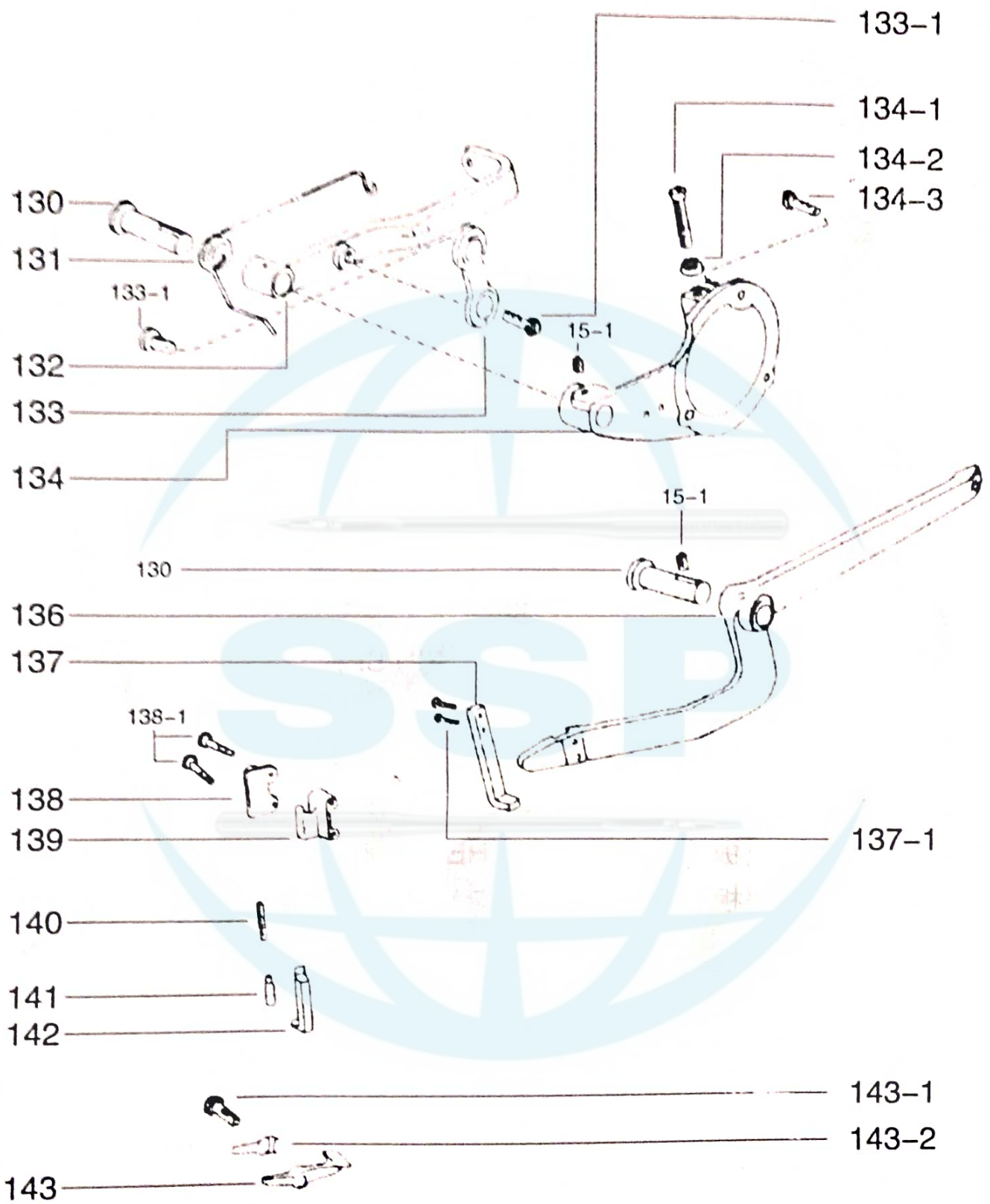
72	送料偏心凸輪	PARTIAL FEEDING CAM
73	驅動連杆	DRIVER ROD
73-1	驅動連杆螺絲	SCREW FOR DRIVER ROD
74	針棒搖動臺後曲柄	BACK FLEX HANDLE
74-1	內六角螺釘	FASTENING SCREW
75	針棒搖動連杆	CONNECTION POLE
75-1	螺絲	FASTENING SCREW
76	曲軸銷	FLEX SHAFT END
77	滑套	SLIPPERY SET
78	叉形連接杆	FORK CONNECTION POLE
79	送料連接銷	FEEDING CONNECTION END
79-1	墊片	CUSHION
79-2	螺母	FASTENING SCREW
80	搖動曲杆	FLEX POLE
81	水平送料軸	FEEDING SHAFT
82	送料調節彈簧	SPRING FOR FEEDING CONTROL
83	彈簧基座	SPRING BASE
84	滑套座	SLIPPERY SET BASE
84-1	拉簧螺釘	EXTENSION SPRING SCREW
84-2	內六角螺釘	FASTENING SCREW
85	送料調節親套	COVER
86	針距調節座	CONTROL BASE FOR NEEDLE DISTANCE
86-1	送料調節彈簧	SPRING FOR FEEDING CONTROL
86-2	螺絲	FASTENING SCREW
87	調節刻度板	SCALE PLATE
88	送料調節導套	LEAD SET FOR FEEDING CONTROL
89	滑套軸	SLIPPERY SHAFT
90	差動調節軸	CONTROL SHAFT
91	針距調節把手	HANDLE CONTROL FOR NEEDLE DISTANCE
92	彈簧	SPRING
94	螺母	NUT
95	螺絲	SCREW





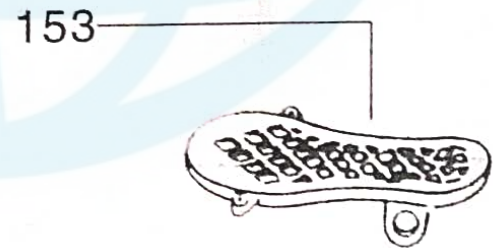
BEFORE SEARCHING ADD  
335 AND PART NUMBER

96	調壓刀螺釘	BOLT FOR TENSION CONTROL
97	調整螺帽	SCREW CAP
98	彈簧墊	SPRING TRAY
99	壓棒套管	PRESS ROD SLEEVE PIPE
99-1	螺釘	BOLT
100	壓棒彈簧 (扁)	PRESS ROD SPRING (FLAT)
101	扁擔吊架 (組件)	SHOULDER POLE STAND (PACKAGE)
101-1	螺絲	FASTENING SCREW FOR
102	壓棒拉基	PRESSER BAR GUIDE COLLAR
102-1	連接螺栓	CONNECTION BOLT
102-2	螺母	NUT
103	壓腳提升把手	LIFTING HANDLE
103-1	提升把手梢	LIFTING HANDLE END
104	壓棒	PRESSER BAR
104-1	壓棒螺絲	SCREW
105	彈簧壓杆	SPRING PRESSER POLE
106	彈簧	SPRING
107A	喇叭型外壓腳	OUTER PRESSER FOOT
107B	平面型外壓腳	FLAT PRESSER FOOT
108	墊片	WASHER
109	上送料驅動杆	UP FEEDING POLE DRIVER
110	上送料連接螺栓	CONNECTION BOLT FOR UP FEEDING
111	設定搖臂心	ROCKER ARM
112	上送料搖臂	UP FEEDING ROCKER ARM
112-1	內六角螺釘	FASTENING SCREW
113	蝶形螺母	FASTENING SCREW
114	上送料軸偏心輪	PARTIAL WHEEL
114-1	螺絲	SCREW
115	上送料親套	BUSHING
117	上送料軸	UP FEEDING SHAFT
118	上送料搖杆	UP FEEDING ROCKER
119	上送料連杆	UP FEEDING CONNECTING ROD
119-1	螺絲	FASTENING SCREW
120	三角搖臂	TRIANGULAR ROCKER ARM
121	上送料系搖動連杆	SHAKING CONNECTION ROD
122	上送壓棒銷	PRESS POLE TIP
123	連接導柱	CONNECTION GUIDE POST
124	滾子	ROLLER
125	上送壓棒導座	PRESS POLE LEADING BASE
126	上送壓腳軸	PRESS SHAFT
127-1	螺絲	SCREW
127A	喇叭形內押腳	ESCORT THE FOOT IN THE SHAPE OF THE LOUDSPEAKER
127B	內壓腳	PRESS THE FOOT INSIDE
128	托架定位板	FIXTURE BOARD
128-1	螺絲	SCREW
129	定位滑塊	FIXTURE SLIP
129-1	螺絲	FASTENING SCREW



130	杠杆銷軸	LEVER PIVOT
131	扭簧	SPRING
132	短杠杆	SHORT LEVER
133	杠杆連杆	CONNECTING ROD OF THE LEVER
133-1	杠杆螺絲	LEVER SCREW
134	後箱蓋	BACK CASE LID
134-1	螺絲	SCREW
134-2	螺母	NUT
134-3	螺絲	SCREW
136	長杠杆	LONG LEVER
137	吊鈎	CLIVER
137-1	螺絲	FASTENING SCREW
138	導銷座	GUIDE SEAT
138-1	螺絲	SCREW
139	栓銷銷座	BOLT PIN SEAT
140	栓銷彈簧	BOLT PIN SPRING
141	栓銷	BOLT PIN
142	頂銷滑板	SLIPPREY BOARD
143	搖板	SHAKING BOARD
143-1	搖板螺絲	SCREW
143-2	搖板彈片	SHRAPNEL



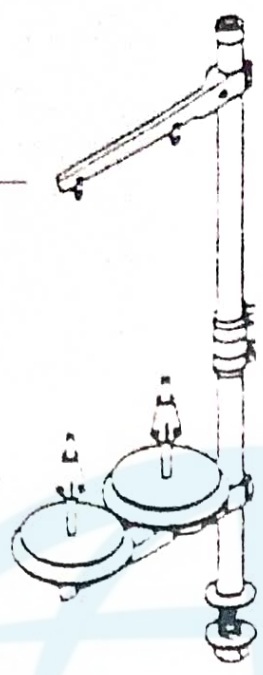


144	大起子	BIG OPENER
145	中起子	MIDDLE OPENER
146	小起子	SMALL OPENER
147	梭心	SHUTTLE
148	車針	NEEDLE
149	防塵罩	DUSTPROOF COVER
150	零件盒	ACCESSORY BOX
151	油壺	DIL BOAT
152	打綫器	FEEDING LINE IMPLEMENT
153	鐵鞋	IRON SHOE

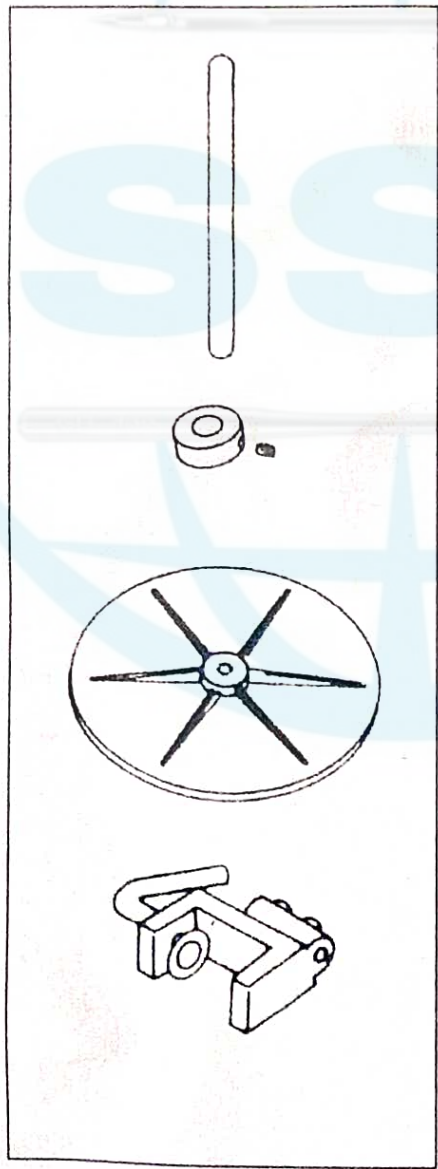


SSP

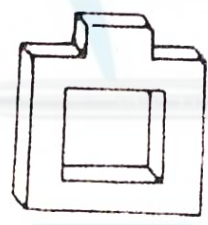
154



155



156



157



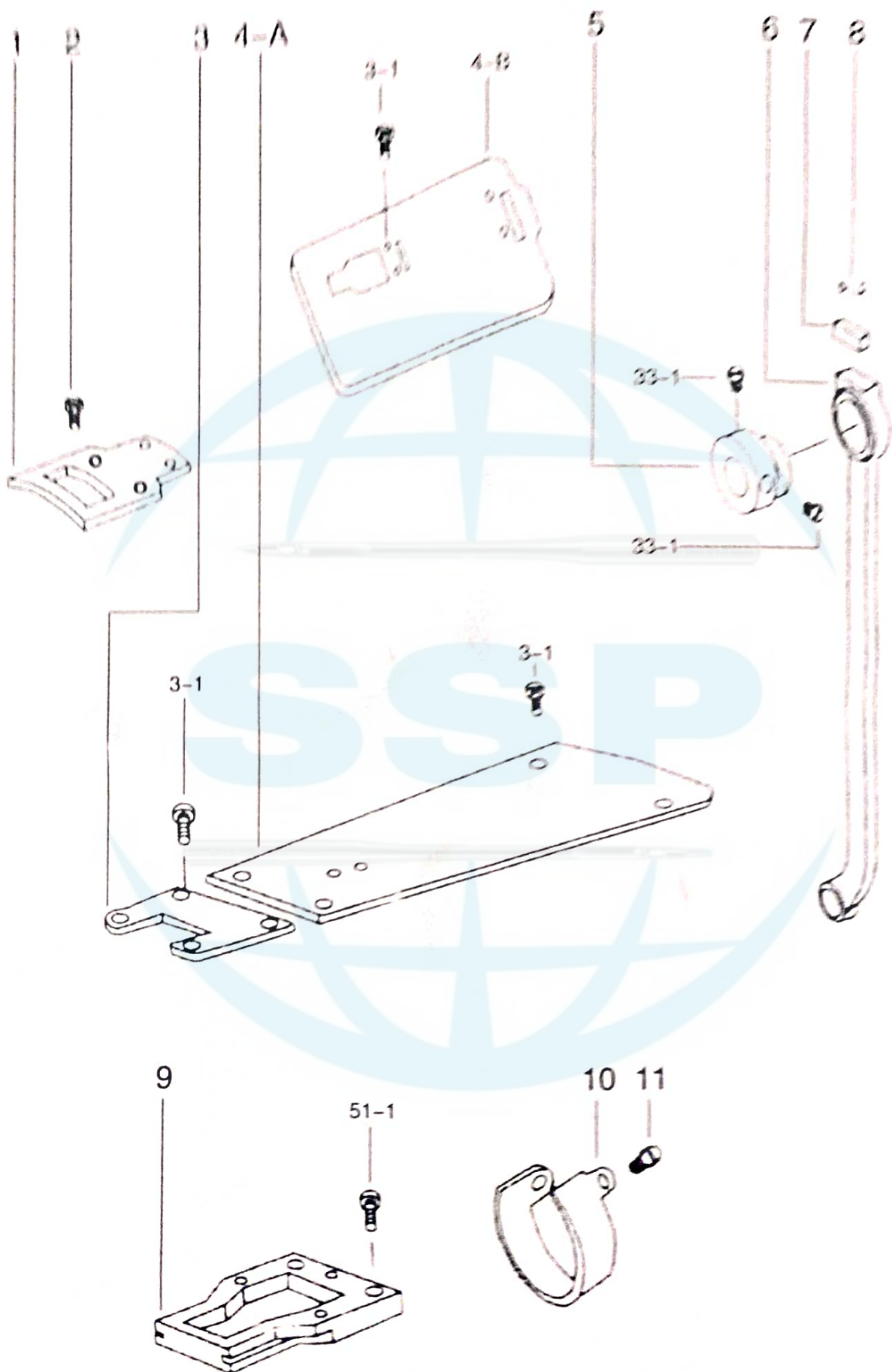


BEFORE SEARCHING ADD  
335 AND PART NUMBER

154	L型二綫架	LINE TWO SHELF OF THE MODEL L
155	綫盤	THREAD TRAY
156	橡皮墊	RUBBER CUSHION
157	鏈條鏈鈎	CHAIN& CHAIN HOOK



# 335-8B



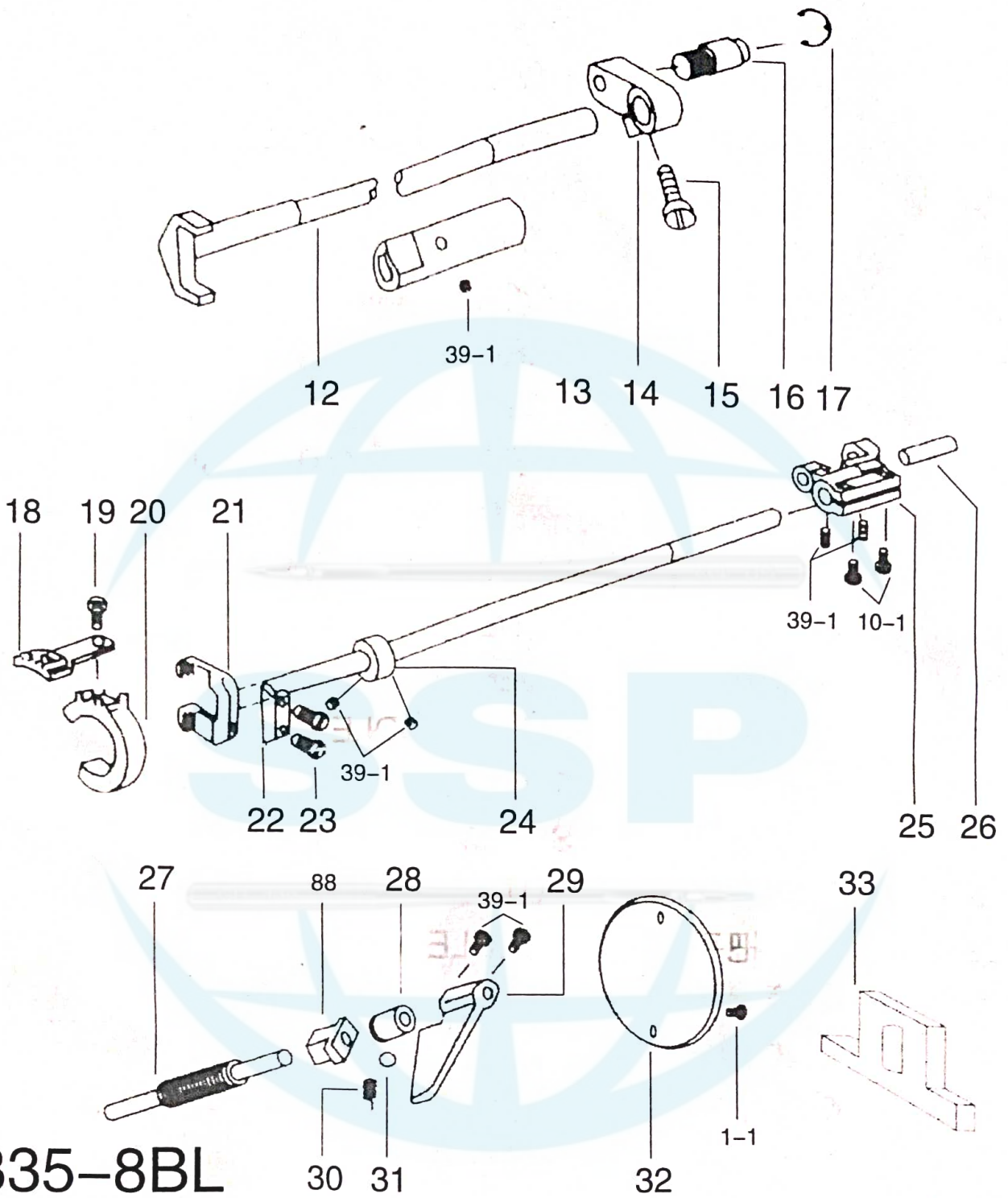
BEFORE SEARCHING ADD  
335 AND PART NUMBER

1	針板	NEEDLE PLATE
2	螺絲	SCREW
3	針板座固定片	FIXTURE PIECE FOR NEEDLE PLATE BASE
3-1	螺絲	SCREW
4-A	護蓋小	SMALL EGIS COVER
4-B	護蓋大	BIG EGIS COVER
5	凸輪	CONVEXITY WHEEL
6	連杆	CONNECTION POLE
7	油棉	WICK
8	彈簧	SPRING
9	針板座	NEEDLE PLATE BASE
10	大釜護片	EGIS PIECE FOR HOOK
11	螺絲	SCREW
33-1	螺絲	SCREW
51-1	螺絲	SCREW

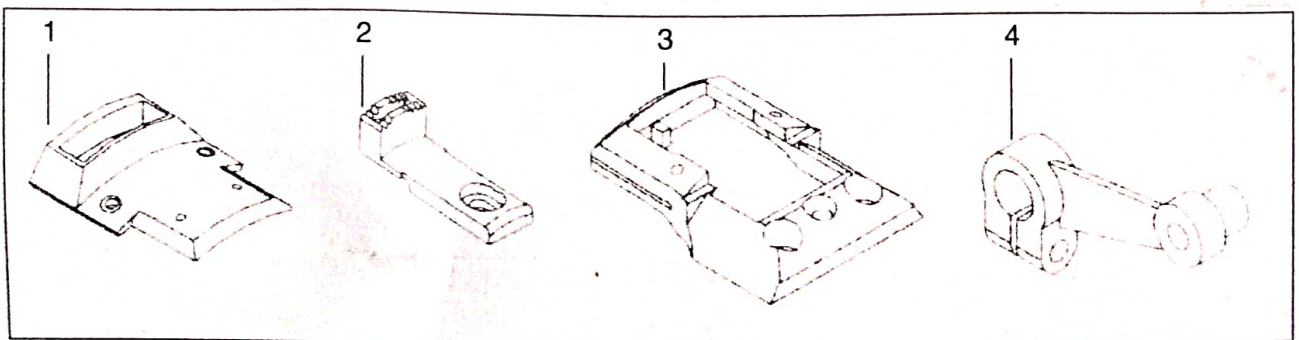
SSP



# 335-8B



# 335-8BL



1-1	螺絲	SCREW
10-1	螺絲	SCREW
12	短送料軸	SHORT FEEDING SHAFT
13	下軸套管	DOWN SHAFT BUSHING
14	送料拉杆	FEEDING DRAWING POLE
15	螺絲	SCREW
16	連杆銷	CONNECTION POLE TIP
17	扣環	BUCKLE RING
18	送金	FEEDING TOOTH
19	螺絲	SCREW
20	送金座	FEEDING TOOTH BASE
21	送料牙架	FEEDING SUPPORT
22	牙架固定片	FIXTURE PIECE FOR FEEDING SUPPORT
23	螺絲	SCREW
24	固定環	COLLAR
25	搖動白柄	FLEX HANDLE
26	白柄銷	FLEX TIP
27	彈簧螺絲	SCREW
28	調整螺母	NUT
29	倒針把手	HANDLE
30	彈簧	SPRING
31	鋼珠	STEEL BALL
32	防沙板	PREVENTION BOARD
33	固定架	FIXTURE SUPPORT
39-1	螺絲	SCREW
<b>335-8BL</b>		
1	針板	NEEDLE PLATE
2	送料板	FEEDING PLATE
3	針板座	NEEDLE PLATE BASE
4	後部	BACK PART