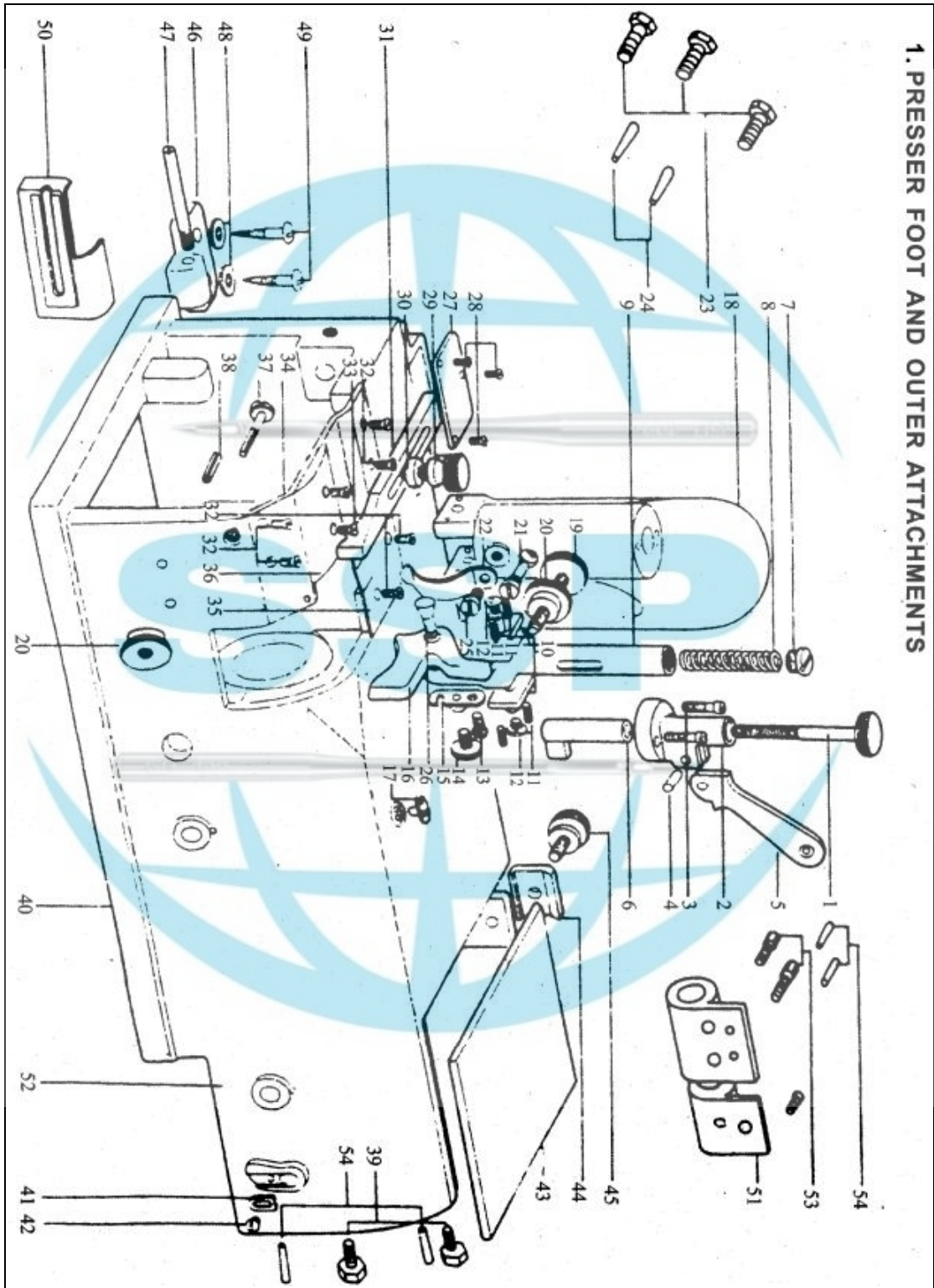
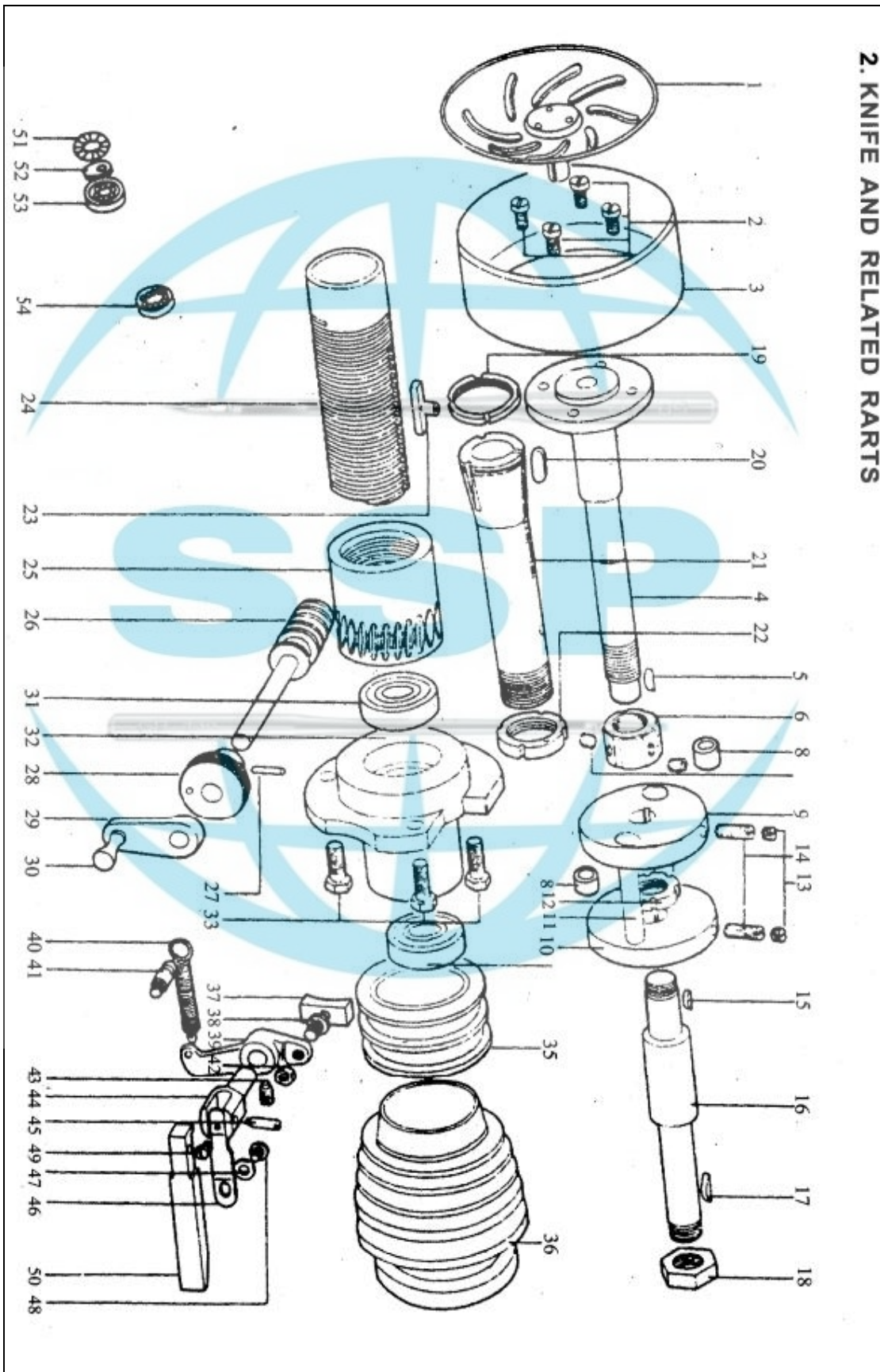


1. PRESSER FOOT AND OUTER ATTACHMENTS



Item	Part No.	Description	Quan	Romar	Item	Part No.	Description	Quan	Romar
1.1	1157	Presser bar adjusting screw	1		1.51	2003	Transmission shelf	1	
1.2	1156	Presser bar lifter bracket	2	9223	1.52	2004	Base plate	1	3.47
1.3	3/16" × 28 × 15 ^o	Presser bar lifter bracket screw	2	9223	1.53	1/4" × 20 × 20 ^o	Set screw (Transmission shaft)	2	
1.4	5 × 16 ^o	Presser bar lifter pin	1		1.54	Φ4 × 22 ^o	Tape pin	4	3.83
1.5	1153	Presser bar lifter	1						
1.6	1155	Presser bar lifter lever	1						
1.7	1150	Presser bar cover screw	1						
1.8	1151	Presser bar spring	1						
1.9	1145	Presser bar	1						
1.10	1148	Presser foot side plates	2						
1.11	9 × 64" × 10 ^o	Presser foot side plates adjusting screws	4						
1.12	3/16" × 28 × 6 ^o	Presser foot side plates screws	1						
1.13	3/16" × 28 × 10 ^o	Presser foot shaft hook metal hinge screw	1						
1.14	1144	presser foot shaft hook metal set screw	1						
1.15	1142	presser foot shaft hook metal	1						
1.16	1140	Presser foot 30mm	1						
1.17	1007	Oil cup	1						
1.18	1001	Arm	1						
1.19	1085	Presser foot adjusting screw	1	3.67					
1.20	1086	Presser foot adjustable screw nuts	2	3.68					
1.21	1152	Presser bar spring pin	1						
1.22	1140	Presser foot spring	1						
1.23	3/8" × 16 × 25 ^o	Inner hexagonal screw	1						
1.24	Φ6 × 25 ^o	Taper pin	1						
1.25	3/16" × 32 × 10 ^o	Presser foot spring screw	1						
1.26	1141	Presser foot shaft	1						
1.27	1122	Waste feeder plate	1						
1.28	9/64" × 40 × 7.5 ^o	Screws	1						
1.29	1009	Ruler set screw	1						
1.30	1008	Ruler set screw washer	1						
1.31	1006	Ruler	1						
1.32	11/64" × 40 × 9 ^o	Slide plate screws	6						
1.33	11/64" × 40 × 7 ^o	Slide plate screws	2						
1.34	1003	Slide plate A	1						
1.35	1004	Slide plate B	1						
1.36	1005	Slide plate C	1						
1.37	15/64" × 28 ^o	Waste feeder screw	1						
1.38	6 × 25.4 ^o	Waste feeder stop pin	1						
1.39	5/16" × 24 × 21 ^o	Hexagon slotted screw (Base plate)	2						
1.40	1002	Bed	1	2.03					
1.41	1036	Belt cover plate	1						
1.42	9/64" × 40 × 6	Belt cover plate screw	1						
1.43	1037	Belt cover lid	1						
1.44	1038	Belt cover lid stopper	1						
1.45	1009	Ruler set screw	1	1.29					
1.46	2001	Hinges	2						
1.47	2002	Hinge pins	2						
1.48	18 × 6.3 × 1.6	Hinge set screw washers	4						
1.49	6 × 30	Hinge set screws	4						
1.50	1105	Waste feeder metals(SET)	1						







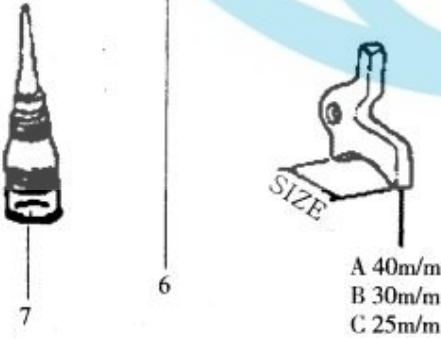
2. KNIFE AND RELATED PARTS



Item	Part No.	Description	Quan	Romar
2.1	1021	leather peeled cover	1	
2.2	M6 p1.0 x 10 ^e	Knife set screws	4	
2.3	1010	Knife	1	
2.4	1011	Knife shaft	1	
2.5	3 x 13	Knife shaft key	1	
2.6	Φ28 x M16 x 7 x P1.5	Knife shaft nuts	2	
2.8	1023	Rubber bushings	2	
2.9	1015	Puller shaft flange holder	1	
2.10	1033	Pulley shaft flange	1	
2.11	1034	Flange shafts	2	
2.12	Φ28 x M18 x 7 x P1.5	Pulley shaft flange nut	1	
2.13	9/32" x 28 x 4.5	Pulley shaft flange screws(B)	2	
2.14	9/32" x 28 x 18	Pulley shaft flange screws(A)	2	
2.15	3 x 10	Pulley shaft key(small)	1	
2.16	1031	Pulley shaft	1	
2.17	3 x 16	Pulley shaft key	1	
2.18	M16p x P1.5	Hexagonal nut(A)	1	
2.23	1020	Knife shaft lead pipe key	1	
2.24	1013	knife shaft lead pipe	1	
2.25	1014	Knife shaft worm wheel	1	
2.26	1016	Knife shaft worm	1	
2.27	3 x 18 ^e	Taper pin	1	
2.28	1017	Knife adjusting knob	1	
2.29	1018	Knife adjusting handle	1	
2.30	1020	Knife adjusting handle Knob	1	
2.31	6203Z	pulley shaft bearings	1	
2.32	6023Z	Pulley shaft metal	1	
2.33	5/16" x 24 x 21 ^e	pulley shaft metal screws	3	1.39
2.34		Pulley shaft bearing	1	
2.35	1035	Clutch	1	
2.36	1030	Pulley	1	
2.37	1049	Clutch slide block	1	
2.38	1040	Clutch slide block screw	1	
2.39	1043	Clutch arm	1	
2.40	1024	Clutch spring	1	
2.41	1046	Clutch spring hook	1	
2.42	1/4" x 40	Clutch slide block screw nut	1	
2.43	15/64" x 28 x 8 ^e	Clutch lever screw	1	
2.44	1041	Clutch lever shaft	1	
2.45	1160	Clutch arm screw	1	
2.46	1042	Clutch lever spring	1	
2.47		Clutch lever spring washer	1	
2.48	9/64" x 40 x 6 ^e	Clutch lever spring hinge screw	1	
2.49	9/64" x 40 x 6 ^e	Clutch lever spring screw	1	
2.50	1039	Clutch lever	1	
2.51	NTB2035	Trust bearing	1	
2.52	20 x 35 x 1	Flat gasket	1	
2.53	6004 ZZ	Bearing	1	
2.54	6023 ZZ	Bearing	1	2.31

Item	Part No.	Description	Quan	Romar	Item	Part No.	Description	Quan	Romar
3.1		Worm wheel box	1		3.43	15/64" × 28 × 8 ^ø	Belt guide pulley shaft screws	2	
3.2	1116	Main shaft worm gear Wheel	1		3.44	1060	Belt guide bracket	1	
3.3	1115	Main shaft worm gear	1		3.45	3 × 18	Belt guide bracket taper pin	1	2.27
3.4	1119	Roller driving shaft Metal	1		3.46	1067	Belt guide bracket spring	1	
3.5	1120	Roller driving shaft metal(2)	1		3.47	1061	Belt guide bracket shaft	1	
3.6	9/64" × 40 × 90 ^ø	Main shaft worm gear Wheel screw	1		3.48	1065	Belt guide bracket turing stoppers	2	
3.7	1123	Main shaft worm gear Chamber cover screw	1		3.49	1118	Roller driving shaft	1	
3.8		Main shaft front bushing	1		3.50	3 × 13	Roller driving shaft key	1	
3.9	121803	Main shaft worm gear chamber oil seal	1		3.51	1121	Roller driving shaft joint	1	
3.10	1124	Main shaft worm gear Chamber screw	1		3.52	1094	Roller shaft oil wick	1	
3.11	2.5 × 10	main shaft key(1)	1		3.53	1081	Roller shaft	1	
3.12	1110	main shaft	1		3.54		Roller shaft oil seal plug	1	
3.13	3 × 16	Main shaft key(2)	1		3.55	1080	Roller	1	
3.14	6002 ZZ	main shaft bearing	1		3.56	1082	Roller washer	1	
3.15	M63 × 10 × P1.5	Main shaft bearing holder screw	1		3.57	1083	Roller bracket	1	
3.16	1111	Main shaft pulley	1		3.58	15/64" × 28 × 10 ^ø	Roller shaft screw	1	
3.17	M14 × P1.5	Hexagonal nut B	1		3.59	11/64" × 40 × 3.5 ^ø	screw	1	
3.18	3 starK20	Main shaft belt	1		3.60	1098	Waste clear metal shaft screw spring hooks(2)	1	
3.19	1051	Grindstone set screw	1		3.61	1095	Roller bracket arm spring	1	
3.20	1052	Grindstone set screw nut	1		3.62	1096	Roller bracket arm spring hook metal	1	
3.21	1050	Grindstone	1		3.63	1091	Roller bracket arm	1	
3.22	1053	Grindstone shaft	1		3.64	1092	Roller bracket arm adjusting screw	1	
3.23		Grindstone shaft pulley	1		3.65	1093	Roller bracket arm adjusting screw nut	1	
3.24	2.5 × 20	Grindstone shaft pulley taper pin	1		3.66	1097	Roller bracket arm spring hooks(1)	2	
3.25	6200 Z	Grindstone shaft bearing	1		3.67	1085	Roller bracket turning arm adjusting screw	1	
3.26	1056	Grindstone shaft bracket	1		3.68	1086	Roller bracket turning arm adjusting screw nut	1	
3.27	1055	Grindstone shaft bearing roller	2		3.69	1084	Roller bracket turning arm	1	
3.28	1057	Grindstone shaft bracket arm	1		3.70	1088	Roller bracket turning arm spring stopper	1	
3.29	5/16" × 24	Grindstone shaft bracket arm center screw nuts	1		3.71	1087	Roller bracket turning arm spring	1	
3.30	1731	Grindstone shaft bracket arm center screws	3		3.72	1090	Roller bracket turning arm spring nut	1	
3.31	1069	Grindstone shaft bracket arm spring	1		3.73	1089	Roller bracket turning arm spring adjusting screw	1	
3.32	15/64" × 24 × 14 ^ø	Grindstone shaft bracket arm spring screws	2		3.74	1/4 × "20 × 20 ^ø	Set screw	3	1.53
3.33	5/16" × 24 × 14 ^ø	Grindstone shaft bracket screw			3.75	1099	Roller bracket arm center pin	1	
3.34	1/2" × 28	Grindstone adjusting screw pipe nuts	1 2		3.76	1100	Roller bracket arm center pin screw	1	
3.35	1066	Grindstone adjusting screw pipe			3.77	9/64" × 10	Waste clear metal leather nuts	2	
3.36	1058	Grindstone adjusting screw	1		3.78	1104	Waste clear metal	1	
3.37	1059	Grindstone shaft belt	1		3.79	1104	Waste clear metal leather	1	
3.38		Belt guide pulley screws	1		3.80	9/64" × 10	Waste clear metal leather screws	2	
3.39	1063	Belt guide pulley shaft	2		3.81	1103	Waste clear metal spring	1	
3.40	626 Z	Belt guide pulley bearings	4		3.82	1102	Waste clear metal shaft	1	1.54
3.41	1062	Belt guide pulley	2		3.83	Φ4 × 22 ^ø	Taper pin	1	
3.42	1064	Belt guide pulley washers	2		3.84		Roller shaft screws		

4. ACCESSORIES

Item	Part No.	Description	Quan	
 1  2  3	4.1	Grindstone dresser	1	
	4.2	Grindstone nut spanner	1	
	4.3	Knife shaft spanner	1	
	4.4	Knife inter cover remover	1	
	4.5	Bar type grindstone	1	
	4.6	Screw driver large	1	
	4.7	Oiler	1	
	4.16A	1140A	Presser foot 50 mm	1
	4.16B	1140B	Presser foot 30 mm	1
	4.16C	1140C	Presser foot 25 mm	1
 4  5  6  7	Accessories			
	1.47	2002	Hinge pins	2
	1.46	2001	Hinges	2
	1.48	15 x 6.3 x 1.	Hinge set screw washers	2
	1.49	6 x 30	Hinge set screw	4
	2.29	1018	Knife adjusting handle	1
	2.30	1019	Adjusting handle	1
4.5	3006	Bar type grindstone	1	



**WORLD
STITCH**

Mob:-9163721786
Email:-worldstitch786@gmail.com





**WORLD
STITCH**

Mob:-9163721786
Email:-worldstitch786@gmail.com

