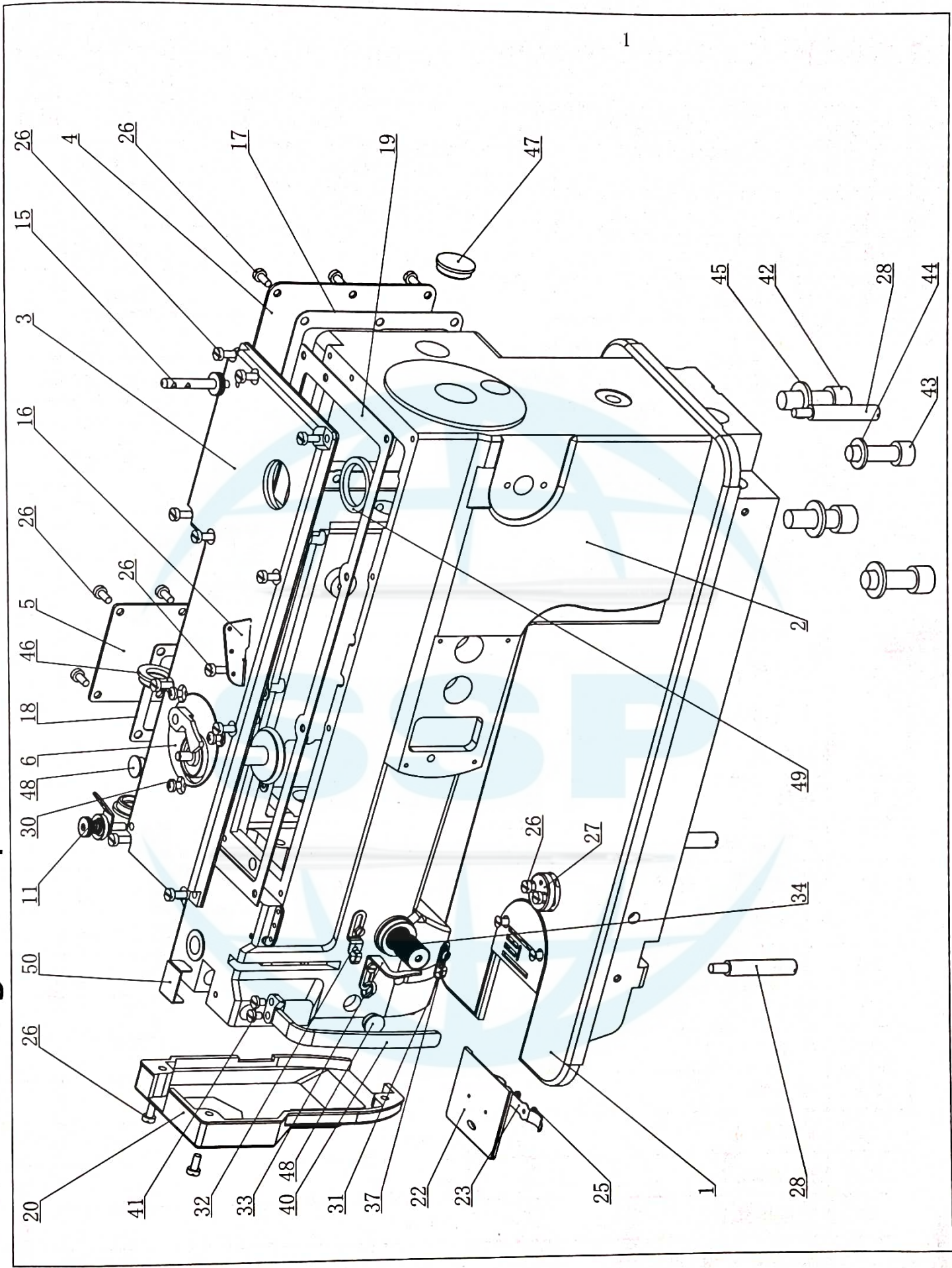


# 1. 机身组件/Casting Components



# 1.机身组件/Casting Components

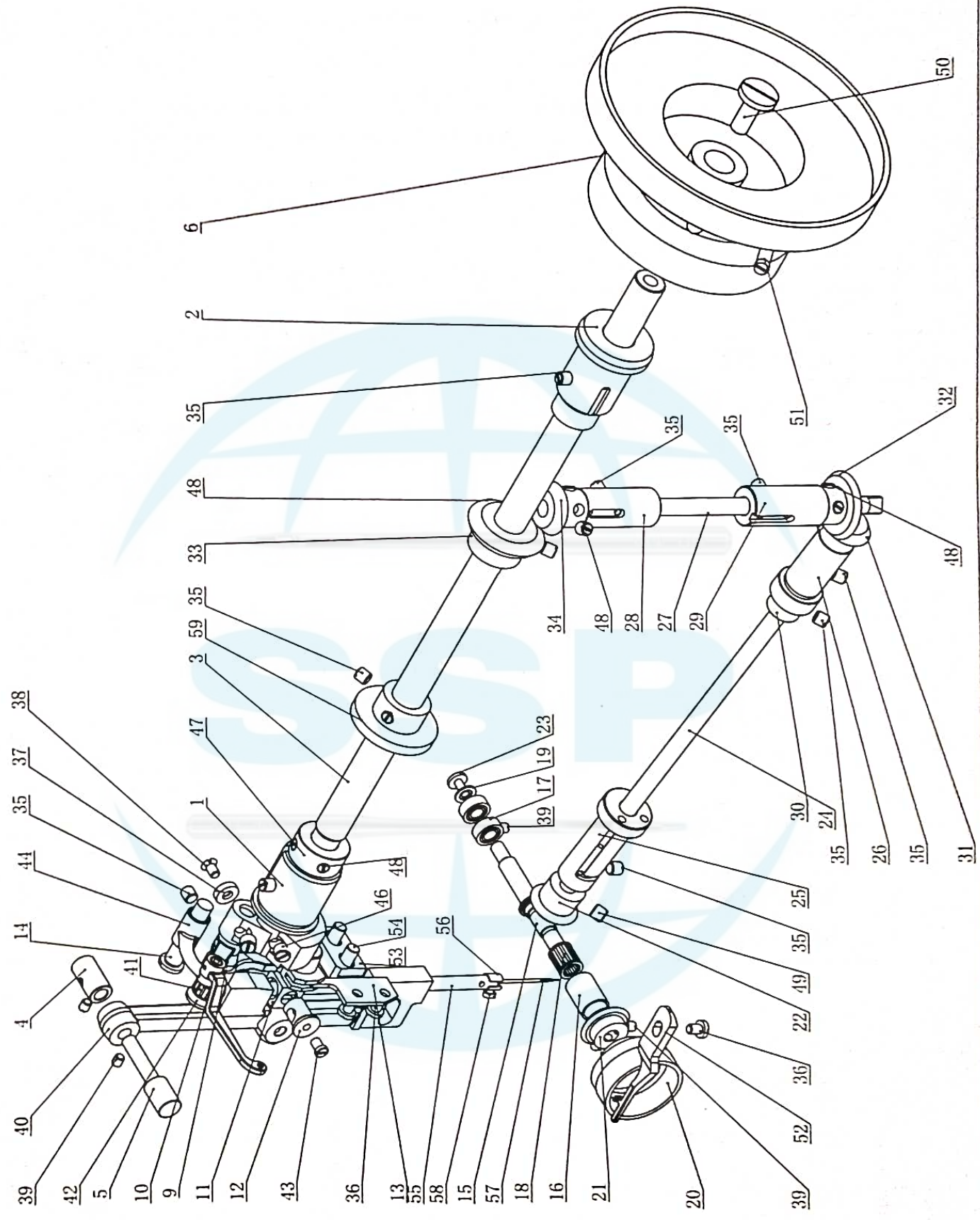
序号	零件名称	Name Of Part	用量/Q' TY
1	机头	Housing Case	1
2	底板	Baseplate	1
3	上罩	Upper Cover	1
4	后大盖板	Back Cover(big)	1
5	后小盖板	Back Cover(small)	1
6	绕线座	Winder Assembly	1
7	绕轮轴		1
8	拨杆销		1
9	手柄		1
10	夹线器轴	Small Thread Tension Assembly	1
11	小夹线螺母		1
12	小夹线板		2
13	小夹线簧		1
14	小过线板		1
15	过线桩	Thread Guide Pole	1
16	过线板	Thread Guide Plate	1
17	后大盖密封垫	Gland Bush(big)	1
18	后小盖板密封垫	Gland Bush(small)	1
19	上罩密封垫	Gland Bush(upper)	1
20	头罩	Face Plate	1
21	针板	Needle Plate	1
22	推板	Slide Plate	1
23	推板簧	Slide Plate Spring	1
24	针板螺钉	Screw	2
25	推板螺钉	Screw	2
26	上盖板螺钉	Screw	2
27	辅助定位板	Positioning Plate	1
28	支脚	Bed Supporting Pole	3
29	平垫圈4	Flap Gasket(M4)	3
30	十字槽平头螺钉M4*5-5	Screw	3



## 1.机身组件/Casting Components

序号	零件名称	Name Of Part	用量/Q' TY
31	下过线勾	Thread Guide(lower)	1
32	右前过线勾	Thread Guide(right front)	1
33	左前过线勾	Thread Guide(left front)	1
34	夹线旋钮	Thread Tension Assembly	1
35	夹线板		2
36	夹线簧		1
37	过线勾螺钉	Screw	3
38	三眼线孔	3-eye Thread Guide	1
39	三眼线孔螺钉	Screw	2
40	挑线杆防护板	Thread Take-up Lever Cover	1
41	SM11/64*40螺钉	Screw	2
42	机头连接螺栓	Bolt (M12)	3
43	机头连接螺栓M10	Bolt (M10)	1
44	平垫圈10	Flap Gasket (M10)	1
45	平垫圈12	Flap Gasket (M12)	3
46	橡胶油封圈A	Oil Seal Plug A	2
47	橡胶油封圈B	Oil Seal Plug B	1
48	橡胶油封圈C	Oil Seal Plug C	2
49	橡胶油封圈D	Oil Seal Plug D	1
50	机头小盖板	Small Cover	1

# 2. 针杆旋梭机构组件/Needle Bar And Hook Components





## 2.针杆旋梭机构组件/Needle Bar And Hook Components

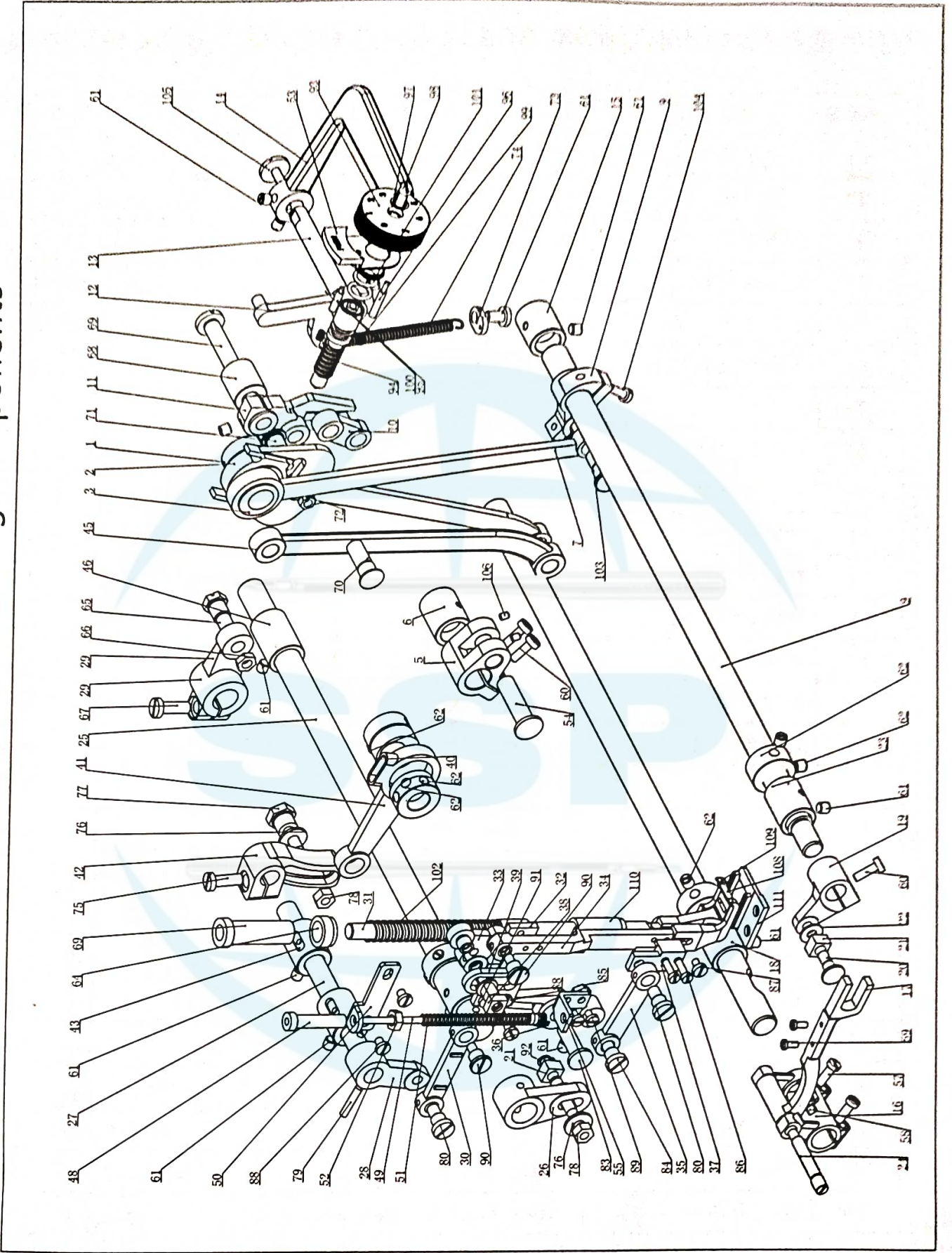
序号	零件名称	Name Of Part	用量/Q' TY
1	上轴前套	Upper Shaft Bush(front)	1
2	上轴后套	Upper Shaft Bush(rear)	1
3	上轴	Upper Shaft	1
4	针杆架销套	Needle Bar Frame Pin Bush	1
5	针杆架销	Needle Bar Frame Pin	1
6	皮带轮	Hand Wheel	1
7	针杆曲柄	Needle Bar Crank	1
8	挑线杆	Take-up-lever	1
9	挑线曲柄	Thread Take-up Crank	1
10	针杆连杆	Needle Bar Link	1
11	针杆连杆轴	Needle Bar Connecting Shaft	1
12	轴套	Bush	1
13	针杆连杆导板	Needle Bar Link Guide	1
14	挑线连杆销	Pin	1
15	旋梭轴	Hook Shaft	1
16	旋梭轴前套	Hook Shaft Bush(front)	1
17	深沟滚动球轴承628/6-2Z	Roller Bearing	2
18	滚针轴承K8*11*13	Roller Bearing	1
19	垫片	Washer	1
20	旋梭组件	Hook	1
21	旋梭轴齿轮	Hook Shaft Gear	1
22	下轴前齿轮	Lower Shaft Gear(front)	1
23	螺钉	Screw	1
24	下轴	Lower Shaft	1
25	下轴前套	Lower Shaft Bush(front)	1
26	下轴后套	Lower Shaft Bush(rear)	1
27	竖轴	Vertical Shaft	1
28	竖轴上套	Vertical Shaft Bush(upper)	1
29	竖轴下套	Vertical Shaft Bush(lower)	1
30	下轴紧圈	Collar	1

## 2.针杆旋梭机构组件/Needle Bar And Hook Components

序号	零件名称	Name Of Part	用量/Q' TY
31	下轴后锥齿轮Z=21	Lower Shaft Bevel Gear	1
32	竖轴下锥齿轮Z=28	Vertical Shaft Bevel Gear(lower)	1
33	上轴锥齿轮Z=33	Upper Shaft Bevel Gear	1
34	竖轴上锥齿轮Z=22	Vertical Shaft Bevel Gear(upper)	1
35	SM15/64*28螺钉	Screw	11
36	SM11/64*40螺钉	Screw	3
37	轴套垫圈	Washer	1
38	针板螺钉	Screw	1
39	SM11/64*40螺钉	Screw	6
40	针杆架	Needle Bar Frame	1
41	针杆连杆滚针轴承BK0808	Roller Bearing	1
42	针杆连杆紧定螺钉	Screw	1
43	针杆紧定螺钉	Screw	1
44	挑线连杆	Take-up lever Assembly	1
45	针杆曲柄定位螺钉	Screw	1
46	针杆曲柄紧定螺钉	Screw	2
47	上轴紧圈	Collar	1
48	齿轮紧定螺钉	Screw	10
49	SM1/4*40紧定螺钉	Screw	2
50	上轮紧吊螺钉	Screw	1
51	带轮紧定螺钉	Screw	2
52	定位勾	Hook Positioning Plate	1
53	针杆架定位板	Positioning Plate	1
54	针杆架定位板螺钉	Screw	2
55	针杆	NeedleBar	1
56	针杆过线套	Needle Bar Thread Guide	1
57	机针	Needle	1
58	机针螺钉	Screw	1
59	绕线传动轮	Gearing Wheel	1



### 3.上下送料机构组件/Upper And Lower Shafts Driving Components



### 3.上下送料机构组件/Upper And Lower Shafts Driving Components

序号	零件名称	Name Of Part	用量/Q' TY
1	送步牙抬牙偏心轮	Feed Eccentric Cam	1
2	牙叉滑块	Slide Block	1
3	送步牙叉	Feed Dog Fork	1
4	送步传动轴	Feed Shaft	1
5	送步连杆	Feed Crank	1
6	送步传动轴后套	Feed Shaft Bush(rear)	1
7	大连杆	Connecting Rod	1
8	抬牙传动轴	Feed Dog Lifting Shaft	1
9	抬牙后连杆	Connecting Rod	1
10	针距调节连杆	Feed Connecting Link	1
11	针距调节器	Stitch Length Adjusting Crank	1
12	针距调节拨杆	Feed Connecting Link	1
13	倒缝手柄轴	Reverse Stitching Crank Shaft	1
14	倒缝手柄	Reverse Lever	1
15	抬牙轴后套	Feed Dog Lifting Shaft Bush(rear)	1
16	送步架连杆	Connecting Link	1
17	牙架	Feed Dog Support	1
18	送步传动轴前套	Feed Shaft Bush(front)	1
19	抬牙曲柄	Feed Dog Lifting Crank	1
20	抬牙曲柄销	Pin	1
21	抬牙曲柄滑块	Slide Block	2
22	抬牙曲柄销垫片	Washer	1
23	抬牙传动轴前套	Feed Dog Lifting Shaft Bush(front)	1
24	送步架连杆销	Pin	1
25	摆动轴	Upper Feed Shaft	1
26	摆动前曲柄	Upper Feed Crank(front)	1
27	小压脚提升传动轴	Walking Foot Lifting Shaft	1
28	小压脚提升前曲柄	Walking Foot Lifting Crank(front)	1
29	同步上曲柄	Upper Crank	1
30	压脚提升曲柄连杆	Feed Lifting Connecting Link	1



### 3.上下送料机构组件/Upper And Lower Shafts Driving Components

序号	零件名称	Name Of Part	用量/Q' TY
31	压脚杆	Presser Bar	1
32	压脚杆导架	Bracket	1
33	三角块	Triangle Block	1
34	压脚连杆	Walking Foot Lever	1
35	摆压脚连杆	Crank Link	1
36	提升压脚变动曲柄	Crank	1
37	曲柄连接块	Link Block	1
38	三角块滑块	Slide Block	1
39	三角块滑块导板	Slide Block Guide Plate	1
40	小压脚提升凸轮	Feed Lifting Cam	1
41	小压脚提升连杆	Feed Lifting Lever	1
42	小压脚提升后曲柄	Feed Lifting Crank(rear)	1
43	小压脚提升传动轴前套	Shaft Bush	1
44	小压脚提升传动轴后套	Shaft Bush	1
45	上下送步同步连杆	Connecting Rod	1
46	摆动轴后套	Upper Feed Shaft Bush(rear)	1
47	摆动轴前套	Upper Feed Shaft Bush(front)	1
48	小调压螺钉	Screw	1
49	小压紧杆	Small Presser Bar	1
50	小压紧杆上座	Small Presser Bar Holder(upper)	1
51	小压杆簧	Spring	1
52	小压紧杆调压螺母	Nut	1
53	针码盘锁板	Lock Plate	1
54	送步曲柄销	Pin	1
55	小压紧杆下座	SmallPresserBarHolder(lower)	1
56	上轴紧圈	Collar	5
57	送步架连杆紧定螺钉	Screw	2
58	SM11/64*40螺钉	Screw	1
59	送布牙螺钉	Screw	2
60	抬牙曲柄紧定螺钉	Screw	3

### 3.上下送料机构组件/Upper And Lower Shafts Driving Components

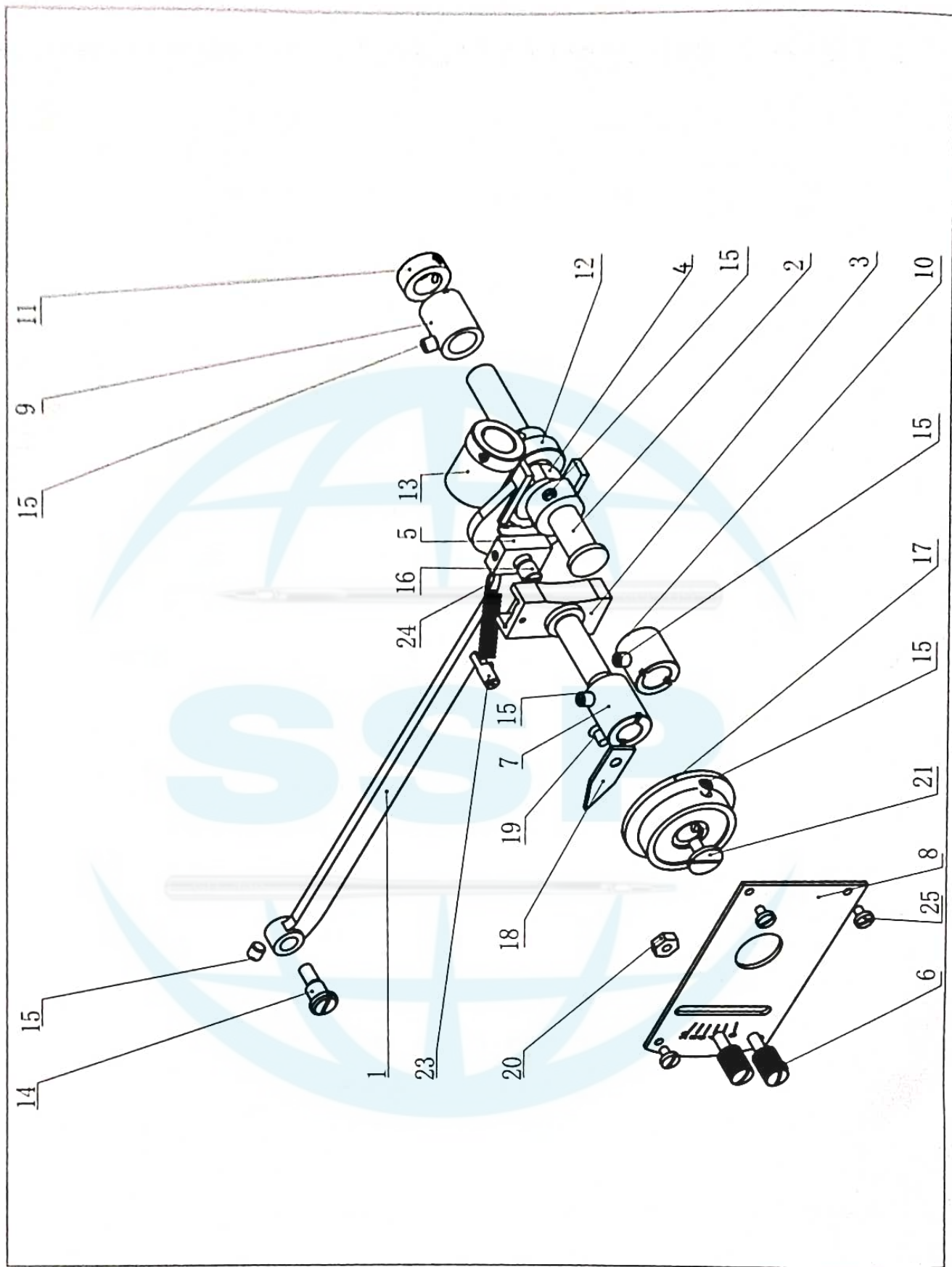
序号	零件名称	Name Of Part	用量/Q' TY
61	SM15/64*28螺钉	Screw	18
62	SM1/4*40螺钉	Screw	10
63	调压螺钉	Screw	1
64	调压螺母	Nut	1
65	同步连杆上销	Pin	1
66	同步连杆销螺母	Nut	1
67	同步上曲柄紧定螺钉	Screw	1
68	针距调节器连接销偏心套	Eccentric Bushing	1
69	针距调节器连接销	Pin	1
70	针距调节连接销	Pin	1
71	送布牙叉连接螺钉	Screw	1
72	牙叉销螺母	Nut	1
73	拉簧座	Spring Holder	1
74	拉簧	Spring	1
75	提升曲柄螺钉	Screw	1
76	提升连杆销垫片	Washer	2
77	提升连杆销	Pin	1
78	提升连杆销螺母	Nut	2
79	压脚提升前曲柄销	Pin	1
80	压脚提升前曲柄连杆销	Pin	2
81	摆动曲柄滑块销	Pin	1
82	摆动前曲柄销	Pin	1
83	提升压脚变动曲柄销	Pin	1
84	压脚提升前曲柄连杆销	Pin	1
85	摆动连杆销螺母	Nut	1
86	曲柄连接块座螺钉	Screw	2
87	大压脚紧定螺钉	Screw	2
88	SM11/64*40螺钉	Screw	4
89	SM9/64*40螺钉	Screw	2
90	三角块连接螺钉	Screw	2



### 3.上下送料机构组件/Upper And Lower Shafts Driving Components

序号	零件名称	Name Of Part	用量/Q' TY
91	三角滑块螺钉	Screw	1
92	轴用挡圈6	Ring	1
93	针距标盘	Stitch Dial	1
94	针距调节螺栓	Positioning Screw	1
95	针距盘止动销	Pin	1
96	针距盘锁销	Pin	1
97	针距盘垫圈	Washer	1
98	针距盘螺钉	Screw	1
99	针距盘弹簧	Spring	2
100	密封环	Seal Ring	2
101	针距锁板压簧	Spring	1
102	压杆簧	Spring	1
103	抬牙后曲柄连接螺钉	Screw	1
104	抬牙后曲柄紧定螺钉	Screw	2
105	正反送料扳手螺钉	Screw	1
106	SM9/64*40紧定螺钉	Screw	2
107	SM9/64*40螺钉	Screw	1
108	小压脚	Presser Foot	1
109	大压脚	Walking Foot	1
110	压脚杆导套	Bush	1
111	送布牙	Feed Dog	1

# 4. 摆针机构组件/Needle Bar Components

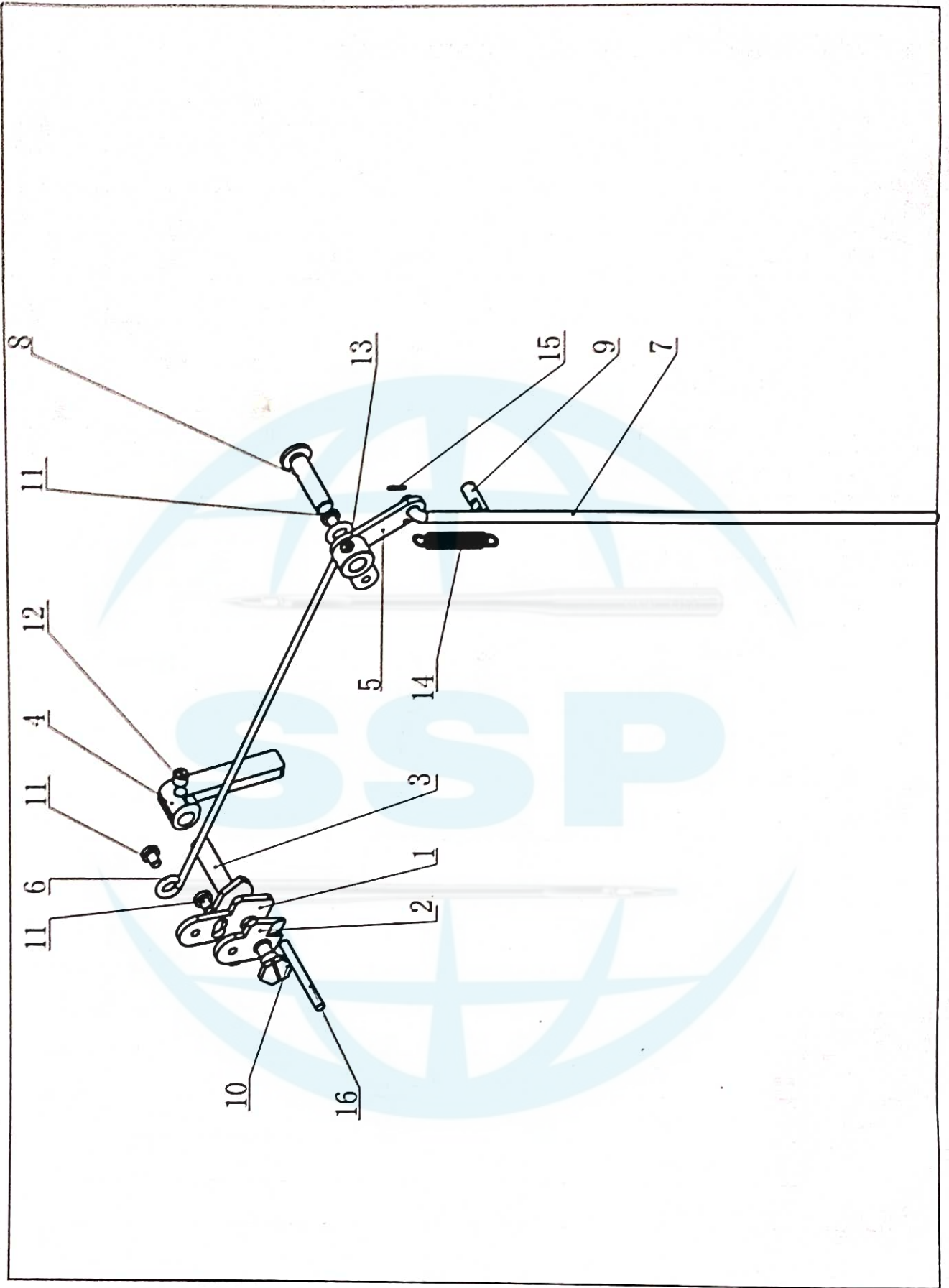




#### 4. 摆针机构组件/Needle Bar Components

序号	零件名称	Name Of Part	用量/Q' TY
1	摆针牙叉	Feed Dog Fork	1
2	摆针凸轮轴	Shaft	1
3	摆针滑块座	Regulator	1
4	摆针凸轮	Cam	1
5	摆针调节器滑块	Slide Block	1
6	针距限位螺钉	Screw	2
7	摆针滑块座轴套	Regulator Bush	1
8	摆针指示面板	Graduated Plate	1
9	摆针凸轮轴后套	Bush(rear)	1
10	摆针凸轮轴前套	Bush(front)	1
11	凸轮轴紧圈	Collar	1
12	大斜齿轮	Bevel Gear(big)	1
13	小斜齿轮	Bevel Gear(small)	1
14	摆针叉偏心销	Pin	1
15	SM15/64*28螺钉	Screw	8
16	连杆滑块连接螺钉	Screw	1
17	调节盘	Dial	1
18	摆针调节指针	Indicator	1
19	针板螺钉	Screw	1
20	锁紧螺母	Nut	3
21	调节盘紧定螺钉	Screw	1
22	SM11/64*40螺钉	Screw	4
23	提升杠杆拉簧桩	Spring Holder	1
24	压脚提升拉簧	Spring	1
25	SM9/64*40螺钉	Screw	4

# 5.压脚提升机构组件/Presser Foot Components

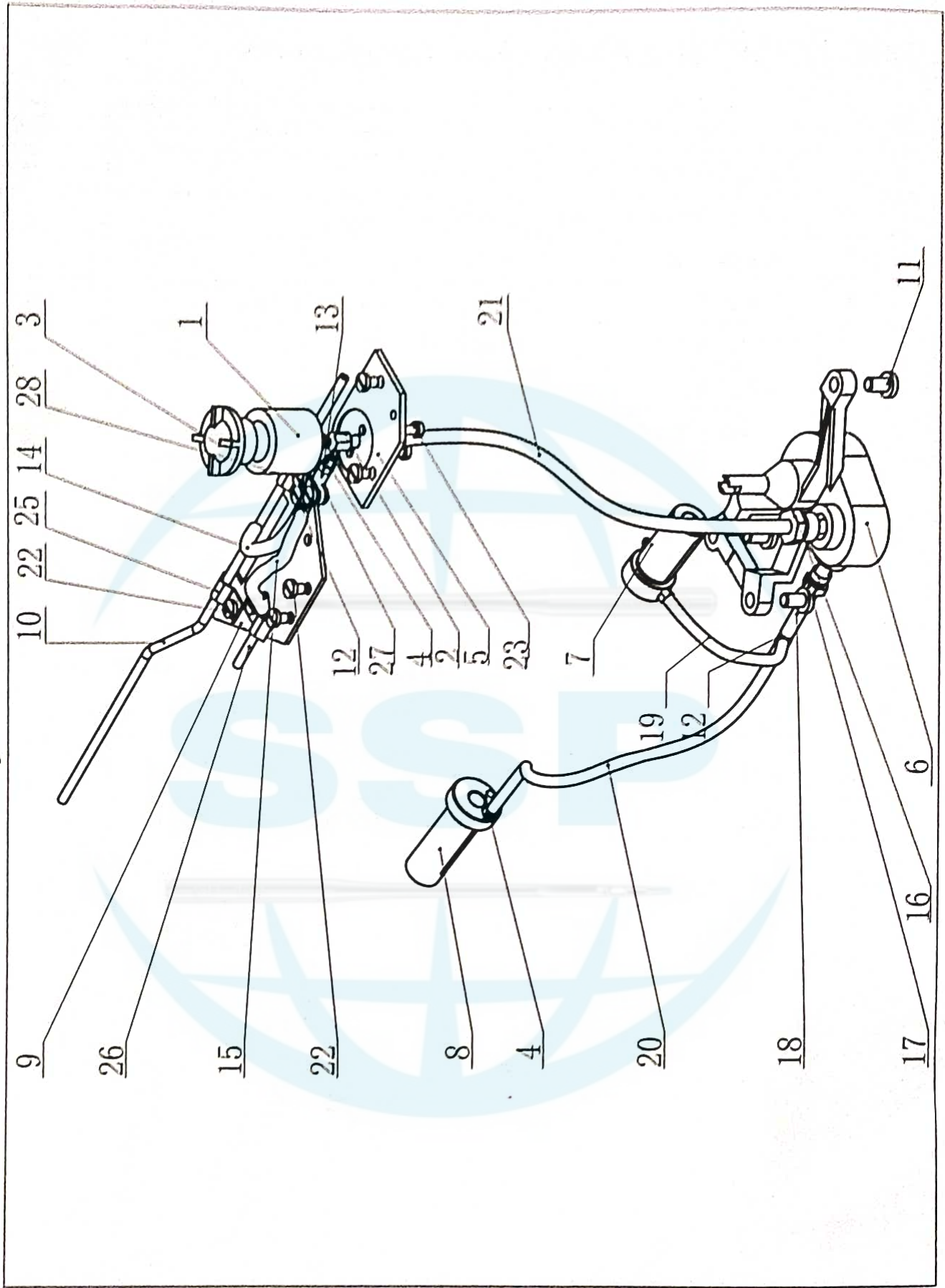




## 5.压脚提升机构组件/Presser Foot Components

序号	零件名称	Name Of Part	用量/Q'TY
1	压脚提升前杠杆	Link Plate	1
2	压脚提升前杠杆调整板	Adjustment Plate	1
3	压脚扳手轴	Shaft	1
4	压脚扳手	Presser Foot Lifting Bar	1
5	压脚提升后杠杆	Link Plate	1
6	压脚提升拉杆	Presser Foot Lifting Tension Rod	1
7	压脚提升顶杆	Presser Foot Lifting Crown Bar	1
8	压脚提升后杠杆销	Pin	1
9	提升杠杆拉簧桩	Spring Holder	1
10	压脚提升前杠杆销	Pin	1
11	SM11/64*40螺钉	Screw	2
12	SM1/4*40紧定螺钉	Screw	1
13	SM15/64*28螺钉	Screw	1
14	压脚提升拉簧	Spring	1
15	卡簧	Jump Ring	1
16	松线杆	Thread Tension Releasing Lever	1

# 6. 供油机构组件/Fuel Assembly





## 6.供油机构组件/Fuel Assembly

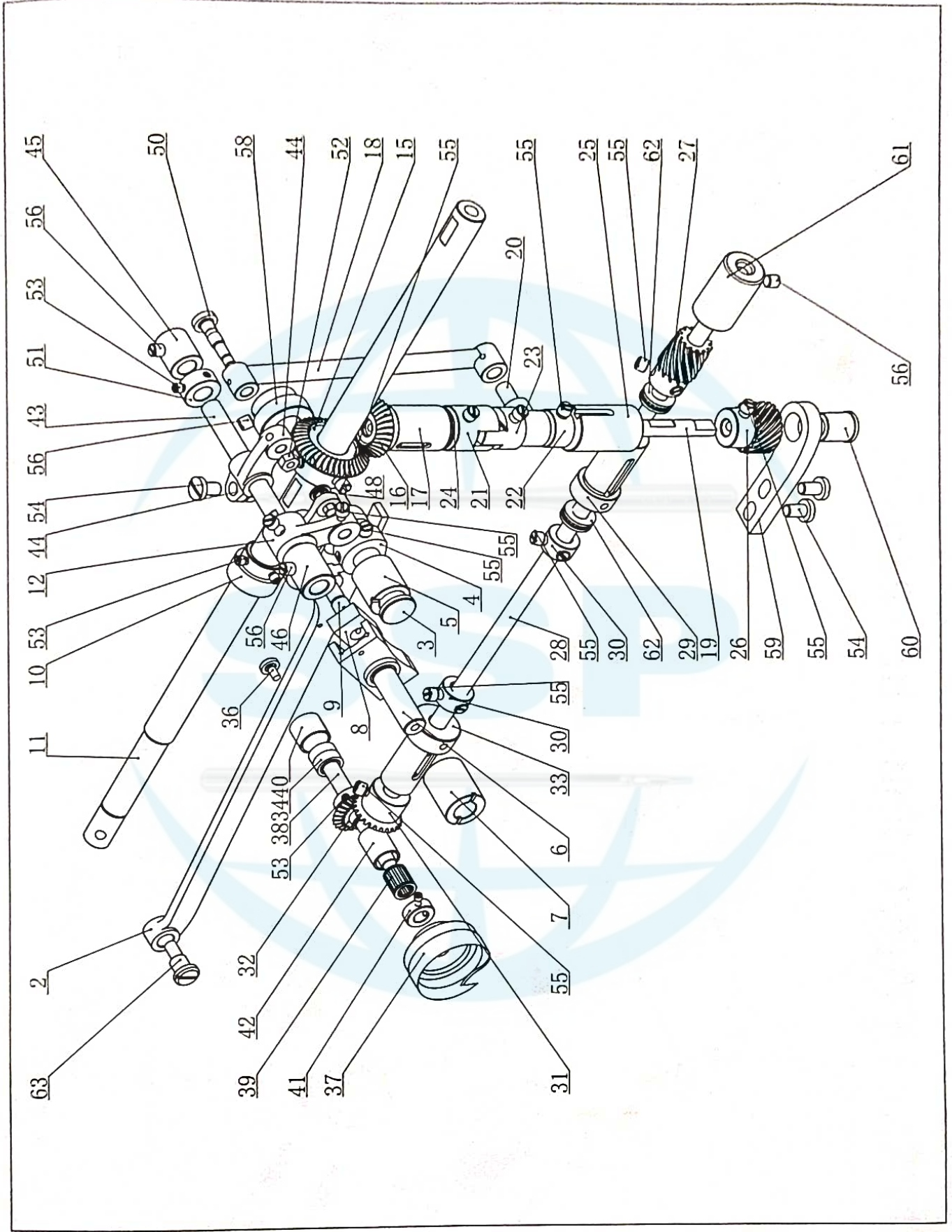
序号	零件名称	Name Of Part	用量/Q' TY
1	储油箱	Oil Tank	1
2	喷嘴	Nozzle	1
3	油窗	Oil Window	1
4	油管连接螺钉	Screw	5
5	储油箱座板	Oil Tank Holder	1
6	油泵	Pump	1
7	下轴后套	Low Shaft Bush(rear)	1
8	下轴前套	Low Shaft Bush(front)	1
9	铜油管支板	Oil Tube Holder	1
10	铜油管A	Copper Tubing A	1
11	SM15/64*28 螺钉	Screw	3
12	三通管接头	Tee Pipe Coupling	2
13	φ4PU油管A	PU Tubing A(φ4)	1
14	φ4PU油管B	PU Tubing B(φ4)	1
15	φ4PU油管C	PU Tubing C(φ4)	1
16	PT1/4锥管螺纹接头	Threaded Joint(PT1/4)	1
17	PT1/8锥管螺纹接头	Threaded Joint(PT1/8)	1
18	φ4PU油管D	PU Tubing D(φ4)	1
19	φ4PU油管E	PU Tubing E(φ4)	1
20	φ4PU油管F	PU Tubing F(φ4)	1
21	φ6PU油管G	PU Tubing G(φ6)	1
22	SM11/64*40 螺钉	Screw	7
23	内六角螺钉M4*8	Screw	2
24	上罩	Upper Cover	1
25	油管卡	Clamp	3
26	铜油管B	Copper Tubing B	1
27	节流卡板A	Throttling Board A	1
28	节流卡板B	Throttling Board B	1
29	SM9/64*40螺钉	Screw	2

## 七、差动部分零件图/Differential Structure Parts

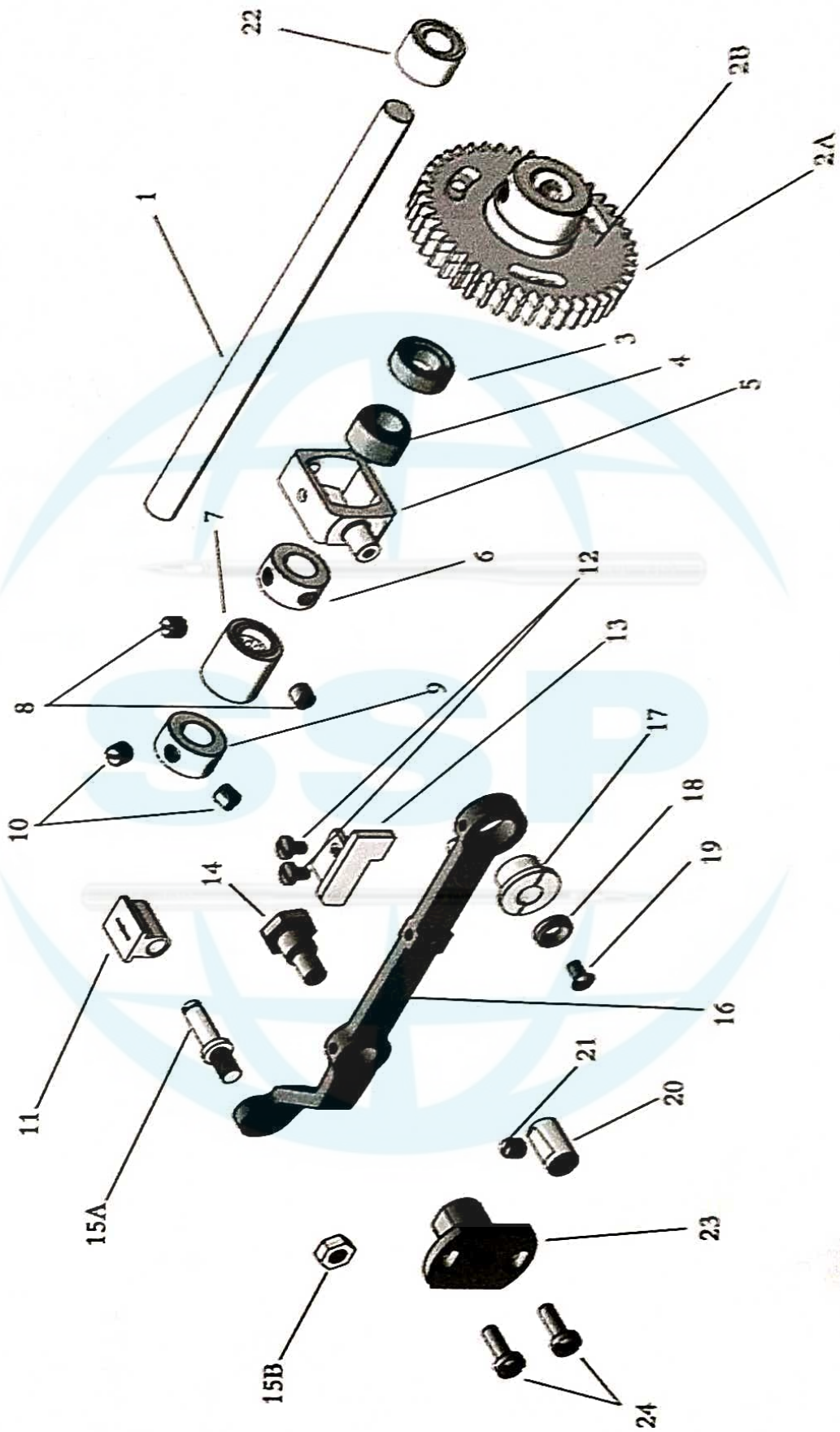
编号 NO.	名称	Name	数量 Quantity
2	摆针牙叉	ZIGZAG FORK	1
3	摆针凸轮轴	ZIGZAG CAM SHAFT	1
4	摆针凸轮	ZIAZAG CAM	1
5	摆针凸轮轴前套	ZIGZAG CAM SHAFT FRONT BUSHING	1
6	摆针滑块座	ZIGZAG SLIDER BASE	1
7	摆针滑块座轴套	SLIDER BASE BUSHING	1
8	摆针调节器滑块	ZIGZAG ADJUSTING SLIDER	1
9	连杆滑块联接螺钉	SCREW	1
10	小斜齿轮	SMALL HELICAL GEAR	1
11	上轴	UPPER SHAFT	1
12	补偿前曲柄	FRONT CRANK	1
13	连杆B	CONNECTING ROD B	1
15	上轴锥齿轮(改)	BEVEL GEAR	1
16	立轴上锥齿轮(改)	BEVEL GEAR	1
17	竖轴上套	UPPER BUSHING	1
18	差动连杆	CONNECTING ROD	1
19	竖轴(修改)	VERTICAL SHAFT	1
20	差动套	DIFFERENTIAL BUSHING	1
21	连轴套A	BUSHING A	1
22	紧圈	COLLAR	1
23	连轴套B	BUSHING B	1
24	调整垫圈	ADJUSTING WASHER	1
25	竖轴下套	VERTICAL SHAFT LOWER BUSHING	1
26	竖轴下斜齿轮	VERTICAL SHAFT LOWER GEAR	1
27	下轴后斜齿轮	VERTICAL SHAFT BACK GEAR	1
28	下轴(修改)	LOWER SHAFT	1
29	下轴后套	LOWER SHAFT BACK BUSHING	1
30	下轴紧圈	LOWER SHAFT COLLAR	2
31	下轴前锥齿轮B	LOWER SHAFT FRONT GEAR	1
32	旋梭轴锥齿轮B	HOOK SHAFT GEAR	1
33	下轴前套	LOWER SHAFT FRONT BUSHING	1
34	滚动球轴承628/6-2Z	BEARING 628/6-2Z	2
35	垫片	WASHER	1
36	螺钉	SCREW	1
37	大旋梭	HOOK	1
38	旋梭轴	HOOK SHAFT	1
39	滚针轴承K8×11×13	BEARING K8*11*13	1
40	旋梭轴承夹套	HOOK BEARING BUSHING	1
41	旋梭轴紧圈	HOOK SHAFT COLLAR	1
42	旋梭轴前套	HOOK SHAFT FRONT BUSHING	1
43	杠杆轴	LEVER SHAFT	1
44	补偿后曲柄	BACK CRANK	1
45	杠杆轴后定位套	LEVER SHAFT BACK BUSHING	1
46	杠杆轴前定位套	LEVER SHAFT FRONT BUSHING	1
47	压脚提升前杠杆销	LEVER PIN	1
48	补偿前曲柄销	FRONT CRANK PIN	1
49	垫圈	COLLAR	1
50	差动连杆上销	CONNECTING ROD PIN	1
51	杠杆轴紧圈	LEVER SHAFT COLLAR	1
52	螺母SM3/16×28	NUT SM3/16*28	1
53	SM11/64×40螺钉	SCREW SM11/64*40	8
54	SM15/64×28螺钉	SN15/64*28	3
55	SM1/4×40螺钉	SCREW SM1/4*40	24
56	SM15/64×28螺钉	SN15/64*28	5
57	SM9/64×40螺钉	SCREW SM9/64*40	3
58	大斜齿轮1:4	BIG HELICAL GEAR 1:4	1
59	立轴下辅助支板	VERTICAL SHAFT LOWER SUPPORT BASE	1
60	立轴下辅助轴套	VERTICAL SHAFT LOWER SUPPORT BUSHING	1
61	下轴辅助后套支套	LOWER SHAFT SUPPORT BUSHING	1
62	推力球轴承F8-16M	BEARING F8-16M	2
63	摆针叉偏心销	PIN	1



# 7. 差动部分零件图/Differential Structure Parts

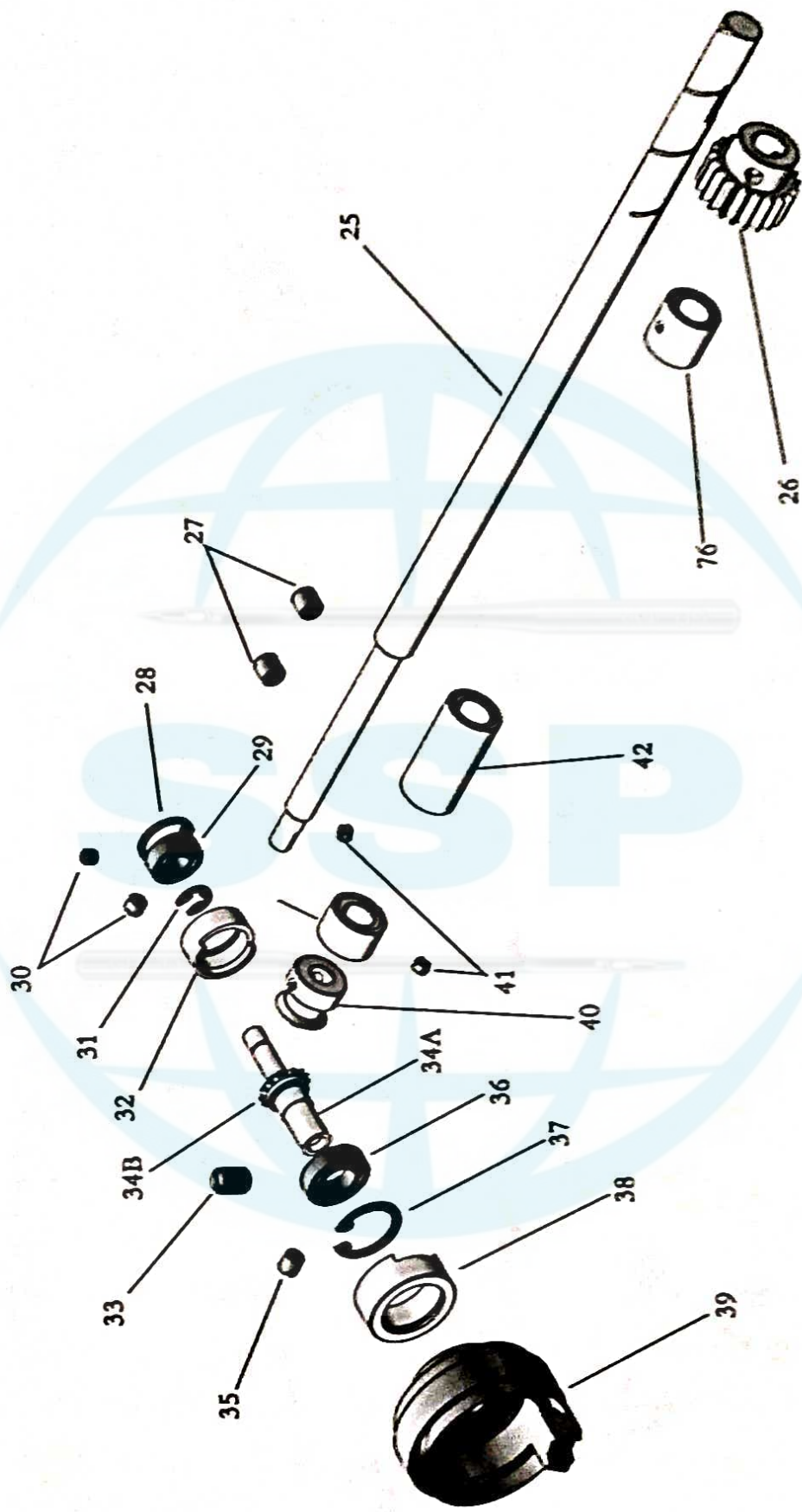


# 8. 横管部分零件图/Cylinder bed Parts

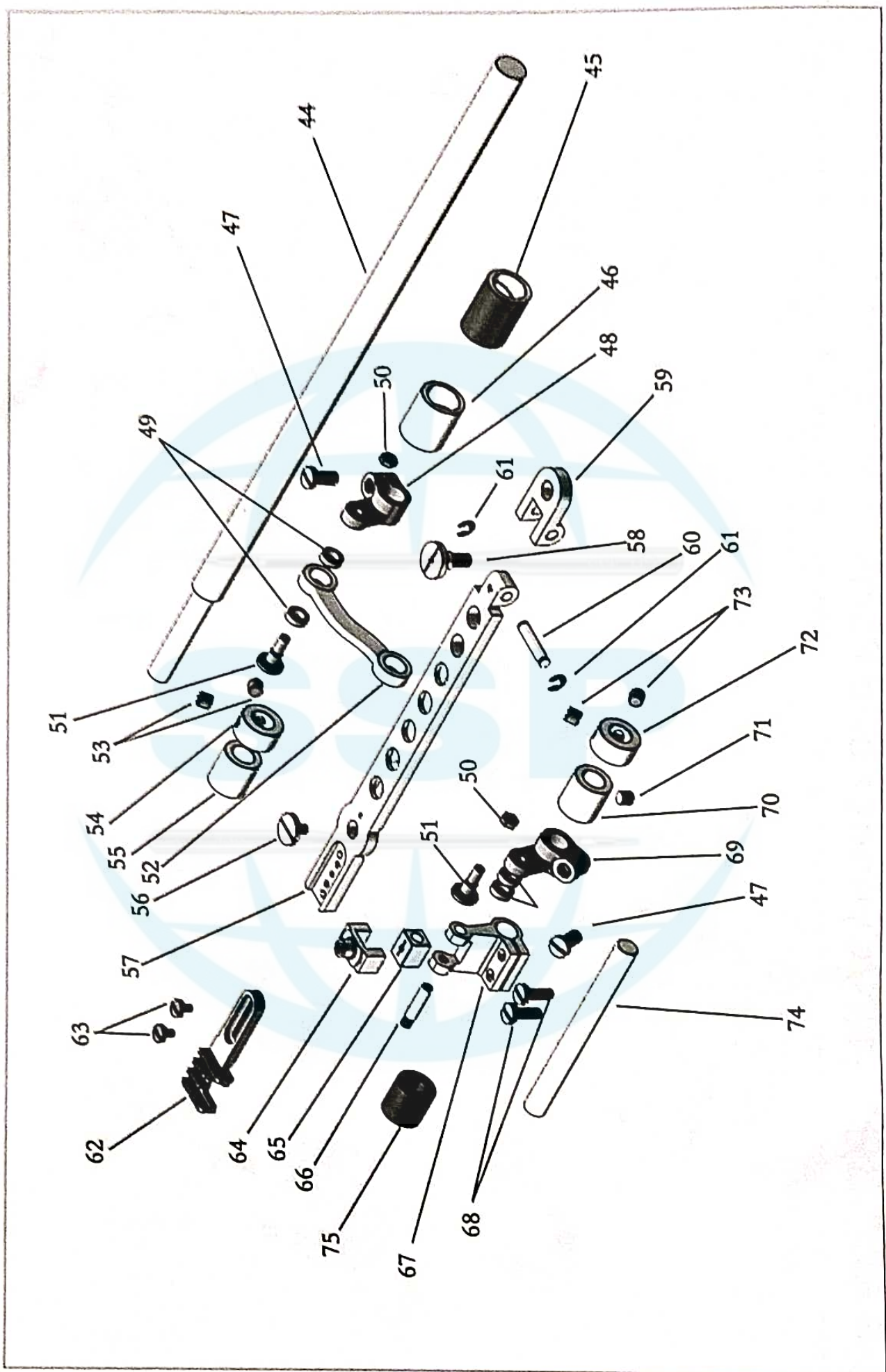




# 8. 横管部分零件图/Cylinder bed Parts



# 8. 横管部分零件图/Cylinder bed Parts





## 8.横管部分零件图/Cylinder bed Parts

序号	零件名称	Name Of Part	数量 /Q' TY
1	下轴	LOWER SHAFT	1
2A	下轴直齿轮	GEAR	1
2B	下轴直齿轮调整齿环	GEAR ADJUSTMENT RING	1
3	下轴后套	BUSH (REAR)	1
4	抬牙凸轮	CAM	1
5	抬牙凸轮座	CAM BASE	1
6	紧圈	COLLAR	1
7	下轴前套	BUSH (FRONT)	1
8	螺钉	SCREW	1
9	紧圈	COLLAR	1
10	螺钉	SCREW	1
11	抬牙块	FEED LIFTING BLOCK	1
12	螺钉	SCREW	1
13	抬牙杠杆挡板	POSITION PLATE	1
14	抬牙杠杆螺钉	SCREW	1
15A	送布曲柄销	PIN	1
15B	螺母	NUT	1
16	抬牙杠杆	FEED LIFTING ROD	1
17	抬牙凸轮调节套	BUSH	1
18	垫片	WASHER	1
19	螺钉	SCREW	1
20	定位销	PIN	1
21	螺钉	SCREW	1
22	下轴中套	BUSH (MIDDLE)	1
23	抬牙杠杆销座	PIN BASE	1
24	螺钉	SCREW	1
25	旋梭轴传动轴	SHAFT	1
26	下轴直齿轮A	GEAR A	1
27	螺钉	SCREW	1

## 8.横管部分零件图/Cylinder bed Parts

28	E卡	E RING	1
29	轴承	BEARING	1
30	螺钉	SCREW	1
31	E卡	E RING	1
32	轴承后套	BUSH	1
33	螺钉	SCREW	1
34A	旋梭轴	HOOK SHAFT	1
34B	旋梭轴齿轮	HOOK SHAFT GEAR	1
35	螺钉	SCREW	1
36	轴承	BEARING	1
37	E卡	E RING	1
38	轴承前套	BUSH	1
39	旋梭	HOOK	1
40	旋梭轴传动齿轮	GEAR	1
41	螺钉	SCREW	1
42	轴承	BEARING	1
43	旋梭传动轴前套	BUSH	1
44	送步轴	FEED SHAFT	1
45	送步轴后套	BUSH	1
46	送步轴中套	BUSH	1
47	螺钉	SCREW	1
48	送布曲柄A	FEED CRANK	1
49	轴承	BEARING	1
50	螺母	NUT	1
51	送步连杆螺钉	SCREW	1
52	送步连杆	FEED ROD	1
53	螺钉	SCREW	1
54	紧圈	COLLAR	1
55	送步轴前套	BUSH	1
56	牙架导块螺钉	SCREW	1



## 8.横管部分零件图/Cylinder bed Parts

57	送步牙架	FEED DOG SUPPORT	1
58	牙架连接板螺钉	SCREW	1
59	送步牙架连接板	LINK PLATE	1
60	送步牙架连接销	PIN	1
61	E卡	E RING	1
62	送布牙	FEED DOG	1
63	送布牙螺钉	SCREW	1
64	牙架导块	FEEDING DIRECT BLOCKS	1
65	送步曲柄滑块	CRANK SLIDE BLOCK	1
66	送步曲柄销	PIN	1
67	送布曲柄	CRANK	1
68	螺钉	SCREW	1
69	送布曲柄B	CRANK B	1
70	短送步轴右套	BUSH	1
71	螺钉	SCREW	1
72	紧圈	COLLAR	1
73	螺钉	SCREW	1
74	送步轴短	FEED SHAFT (SHORT)	1
75	短送步轴左套	BUSH	1
76	旋梭传动轴后套B	BUSH	1