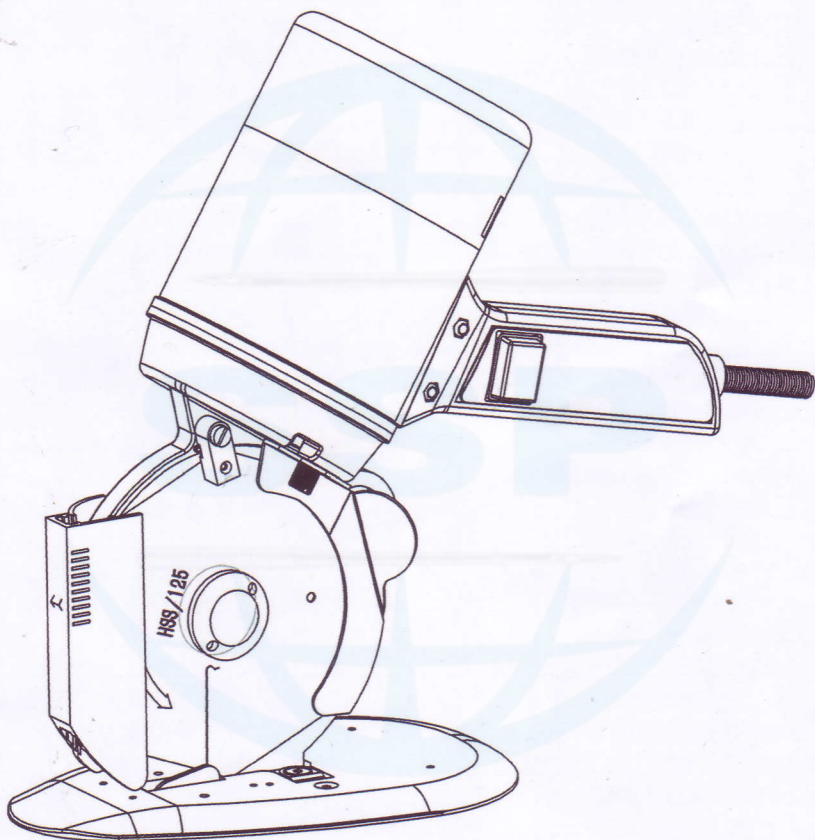


# MODEL: 125

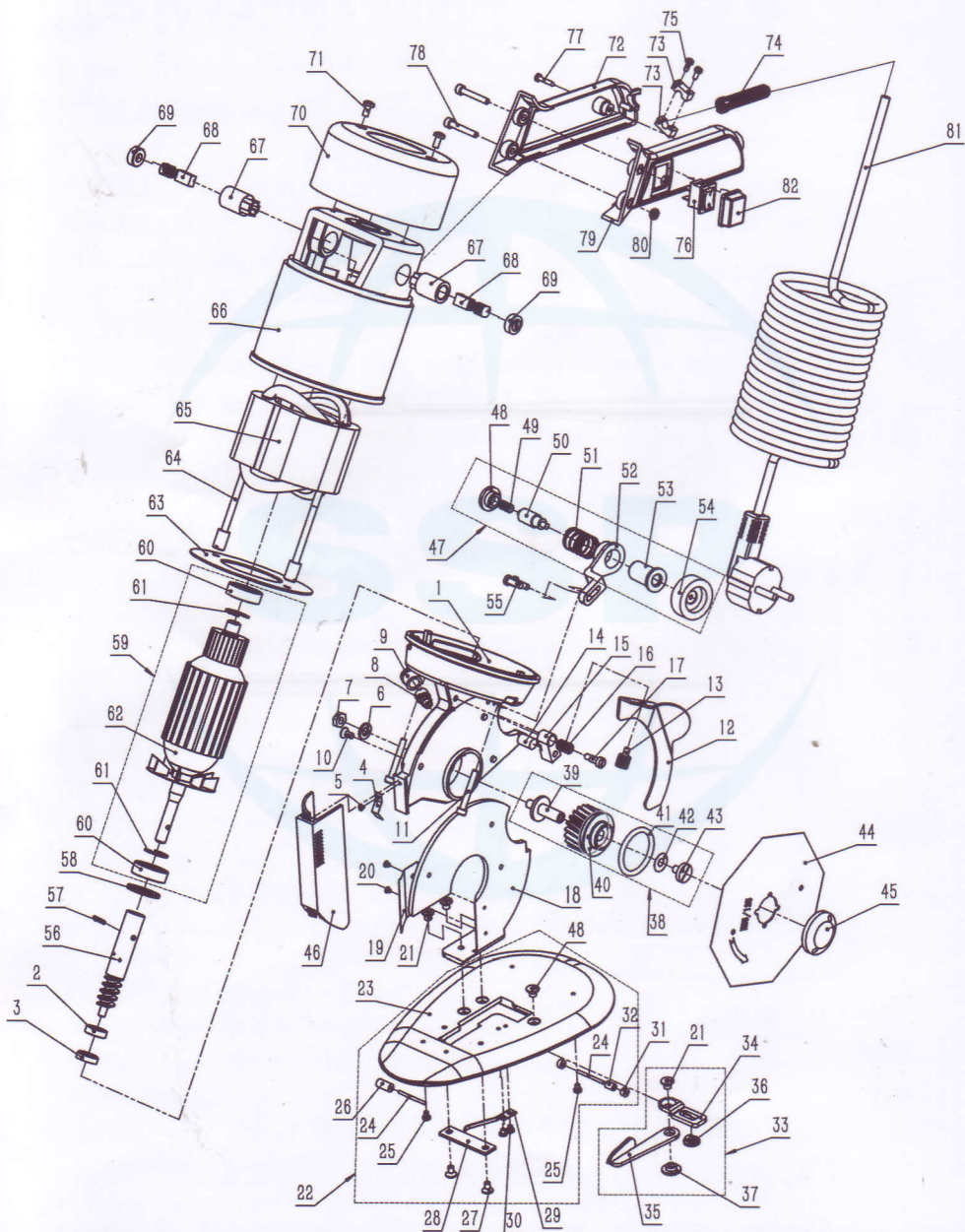
## 圆刀裁剪机

## ROUND KNIFE CUTTER



使用前请仔细阅读此说明手册  
PLEASE READ THE INSTRUCTIONS BEFORE USING.

# 零件手册 (PARTS BOOK)



序号 Ref.no.	零件编号及名称 Part.no& Description
1	H17 齿轮盒 Gear Box
2	S129 轴承 625Drive Gear Metal
3	S130 轴承盖 Cover For Metal
4	S142 护架弹簧片 Spring For Guard
5	S143 M2X3 十字沉头螺钉 Screw
6	B17 Ø 6 平垫 Washer
7	B16 M6 螺母 Nut
8	B10 油杯 Oil Cup
9	B9 油杯盖 Cap For Oil Cup
10	S158 M4X8 十字沉头螺丝 Standard Screw
11	H46 M4X30 内六角螺钉 Standard Screw
12	H48 安全片 Safety Plate
13	B104 安全片螺钉 Screw For Plate
14	S140 油毡 Oil Felt
15	S137 润滑油 Oiler
16	S139 润滑油弹簧 Spring
17	S138 润滑油螺丝 Screw For Oiler
18	H28 机头导向架 Standard
19	H30 分布片 Guide Plate
20	B26 M2.5X3 十字沉头螺丝 Standard Screw
21	B118 M5X6.3 内六角沉头螺钉 Standard Screw
22	H32 底盘组件 Base Plate Assembly
23	H33 底盘 Base Plate
24	B128 滚轴 Roller Shaft
25	B125 M3X5 带发兰螺丝 Standard Screw
26	B124 长滚子 Long Roller
27	A38 M4X7 十字沉头螺钉 Standard Screw
28	H34 下刀支撑架 Lower Blade Holder
29	B127 下刀弹片 Pressure Spring For Lower Blade
30	W7 M3X3 十字圆头螺丝 Standard Screw
31	B129 滚子 Roller
32	B130 滚子隔套 Roller Collar
33	S187 下刀组件 Lower Knife Assembly
34	B174 下刀调节块 Lower Knife Adjuster
35	S275 下刀 Lower Knife
36	B175 调节块螺母 Nut
37	B177 下刀螺母 Lower Blade Nut
38	H53 蜗轮组件 Worm Wheel Assembly
39	S132 蜗轮轴 Worm Wheel Shaft
40	H55 蜗轮 Worm Wheel
41	S131-1 蜗轮密封圈 Washer
42	S134 紫铜垫圈 Brass Washer
43	S133 蜗轮螺丝 Screw
44	H58 刀片 (八角) Octagon Knife
45	S136 刀片帽 Nut For Blade

序号 Ref.no.	零件编号及名称 Part.no & Description
46	H23 护刀架 Blade Guard
47	S185 砂轮成套 Grinder Assembly
48	S154 砂轮按钮 Grinder Button
49	S151 砂轮内轴弹簧 Spring
50	S149 砂轮内轴 Grinder Shaft
51	S153 砂轮外轴弹簧 Spring For Collar
52	S155 砂轮架 Grinder Wheel Holder
53	S152 砂轮外轴 Grinder Collar
54	S150 砂轮 Grinder Wheel
55	S156 M4X12 一字半圆头螺丝 Standard Screw
56	H16 蜗杆 Drive Gear
57	C152 Ø2.5X14 开口销 Roll Pin
58	S106 波形垫圈 Wave Washer
59	H10 转子组件 Rotor Assembly
60	H11 6000 轴承 Bearing
61	H12Ø10 轴用挡圈 Shaft Washer
62	H13 转子 Rotor
63	H9 空气导向圈 Air Guider Washer
64	S108 定子螺丝 Stator Screw
65	H7 定子 Stator
66	H6 电机铝壳 Motor Housing
67	S168 碳刷架组件 Carbon Brush Base
68	S104 碳刷 Carbon Brush
69	S105 碳刷盖 Cap For Carbon Brush
70	H2 拉风盖 Air Guider Cover
71	G42 M4X8 十字圆头螺钉 Standard Screw
72	H70 手柄右块 Handle Right Plate
73	B168 压线块 Cable Press Plate
74	H77 护线簧 Cable Spring
75	G10 M3X1 十一字开口自攻螺丝 Standard Screw
76	H74 扭子开关 Switch
77	B161 M3X16 十字圆头自攻螺丝 Standard Screw
78	H72 M4X22 内六角螺丝 Standard Screw
79	H69 手柄左块 Handle Left Plate
80	G24 M4X3.2 螺帽 Nut
81	A68 电源线 Cord With Plug
82	防尘罩 Dust Cap
附件清单 Accessories list	
83	C172 轴销 Lock Shaft
84	S173 扳手 Spanner
85	S171 润滑油 Grease Oil
86	S169 加油器 Oiler
87	S175 内六角扳手 Spanner
88	S176 附件全套 Accessories Complete Set

# 操作使用说明书： OPERATION MANUAL

**125圆刀裁剪机具有功率大、裁布厚、重量轻等特点，是服装、皮革、鞋帽、制伞和包装纸业的首选之一。**

125 Round knife cloth cutting machine is one of the essential cutting tools for industries such as garments, leather, hats & shoes, umbrella making and wrapping paper etc containing features like high power, cutting thickness and light weight etc.

## 主要技术参数： Main technical parameters

- 1、刀片尺寸：125mm (Blade size: 125mm)
- 2、刀片形状：八角 (Blade shape: Octagon knife)
- 3、裁剪厚度：40mm (Cutting height:40mm)
- 4、电压：220V/110V (Voltage:220V/110V)
- 5、功率：350W (Power:350W)

## 使用方法： Operation methods

- 1、用有安全接地的插座电源以防触电，注意电压是否与本机电压相符。  
(Use a safe grounded socket power supply to prevent electric shock, please pay attention to whether the voltage can match with the voltage of the machine.)
- 2、刀片不锋利时轻按砂砂轮架按钮进行修刀，不要用力过猛。  
(Please press the grinder button to sharpen the knife when it's not sharp, but not too excessive.)
- 3、当发觉刀磨不锋利时，请把砂砂轮卸下在砂布纸上磨去表面的油渍和纤维，再装上即可。  
(When you found out the knife can not be sharpened to be sharp any more, please disassemble the emery wheel then use the sand paper to clean the fibre and oil on the surface of the emery wheel, and finally mount it on.)
- 4、定时给润滑器上油。  
(Please fill the lubricator with oil regularly.)
- 5、定时清理刀片后面和下刀内的纤维和碎片，延长电剪的使用寿命。  
(Regularly cleaning the fibers and debris behind the octagon knife and under the lower knife can extend the service life of the machine.)
- 6、刀片磨小后要调节下刀的角度或更换刀片，达到最佳裁剪效果。  
(You need to adjust the angle of the lower knife or replace it when the octagon knife becomes smaller.)

## 注意事项： Cautions

- 1、严禁裁断和用力拉拽电源线。  
(It is strictly forbidden to pull or cut the power line.)
- 2、严禁堵塞排风口。  
(Non-clogging air vents.)
- 3、严禁把手和身体接触高速运转的刀片。  
(Physically contact with the knife is strictly prohibited when the machine is running.)
- 4、维修和维护机器时，请断开电源。  
(During the maintenance or repairing, please cut off the power supply.)